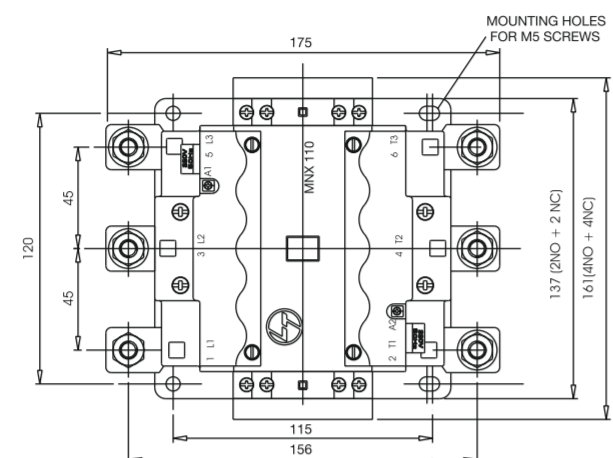
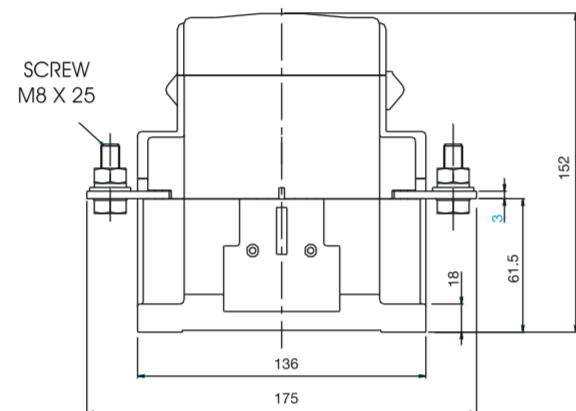


OVERALL DIMENSIONS IN mm



PRINTED TEXT OF ADD-ON BLOCKS & TOP COVER SHOULD BE UPRIGHT WHEN OBLONG MOUNTING HOLES ON REAR HOUSING ARE AT BOTTOM



ACCESSORIES AND SPARES

AUX. CONTACT BLOCKS	MNX - A46S - 2	IN-BUILT FIRST LEFT	CS94205
		IN-BUILT FIRST RIGHT	CS94206
		ADD-ON SECOND LEFT	CS94207
		ADD-ON SECOND RIGHT	CS94208
SPARE COIL	MNX 95		CS94196
	MNX 110		CS94196
	MNX 140		CS94196
SPARE KIT	MNX 95		CS94153
	MNX 110		CS94154
	MNX 140		CS94155
MECHANICAL INTERLOCK	MNX 95	MNX-M44B - 0	CS94198
	MNX 110		
	MNX 140		
SURGE SUPPRESSOR	MNX - S45B - 0	110 V	CS94164A000
		220 - 240 V	CS94164B000
		360 - 525 V	CS94164D000

RECOMMENDED TIGHTENING TORQUE

CONTACTOR TYPE	MAIN POLE TERMINALS		TERMINALS OF AUXILIARY POLE / COIL / ADD-ON BLOCK	
	TERMINAL SCREWS	TORQUE Nm	TERMINAL SCREWS	TORQUE Nm
MNX 95, MNX 110 MNX 140	M8	11	M3.5	1.1

CUSTOMER INTERACTION CELL (CIC) BSNL / MTNL (Toll-Free) : 1800 233 5858
RELIANCE (Toll-Free) : 1800 200 5858
Telephone : 022 6774 5858
email : cic@LNTEBG.com
website : www.LNTEBG.com



L&T Electrical & Automation, Electrical Standard Products
L&T Business Park, TC-2, Tower B, 3rd Floor,
Gate No. 5, Saki Vihar Road, Powai
Mumbai - 400 072, INDIA www.Lntebg.com

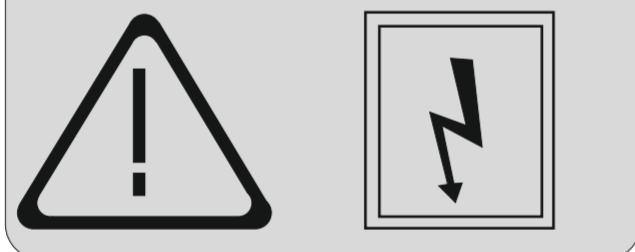


OPERATING INSTRUCTIONS



MNX 95, MNX 110 & MNX 140 CONTACTORS

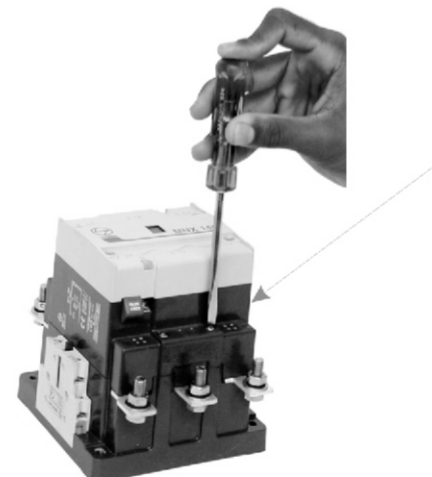
!! WARNING !!



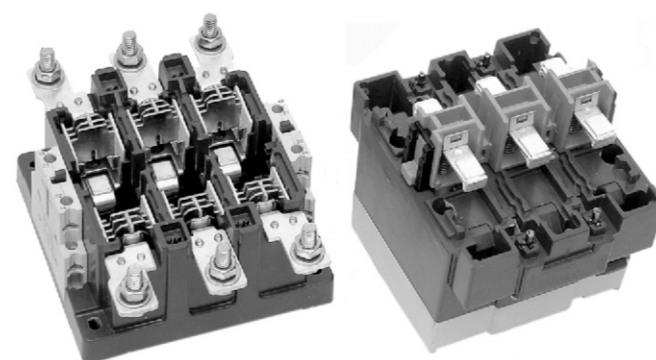
Hazardous voltage
Hazard of electrical shock and burning
Disconnect power and isolate before proceeding with any work on this equipment.

Installation, commissioning and maintenance by qualified personnel only and use according to operating instructions, professional practices, wiring rules, codes, safety regulations applicable to the given installation.

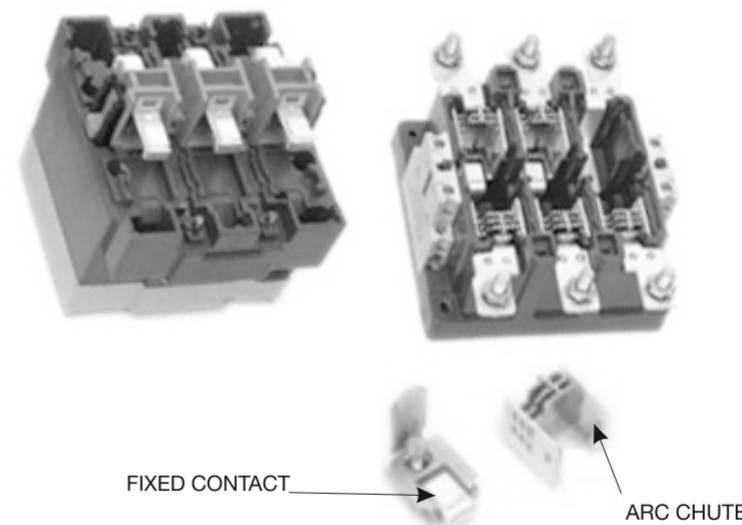
CONTACT INSPECTION



Switch off main power supply & control supply.
Remove front housing (1) by opening quarter turn screws.



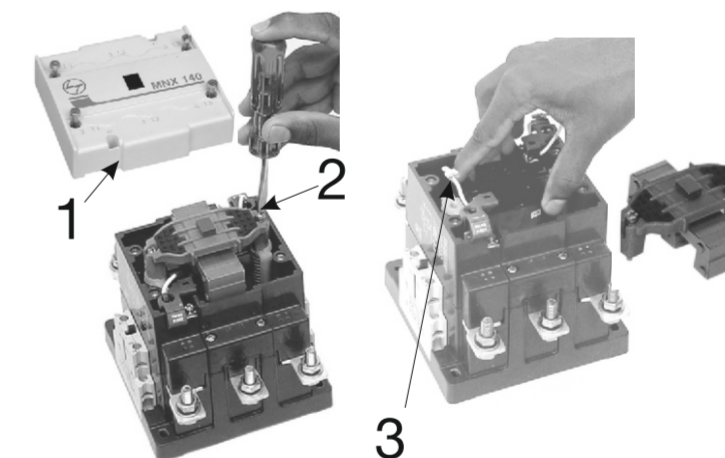
CONTACT REPLACEMENT



1. Remove front housing assembly by opening quarter turn screws.
2. Remove contact spring from bridge, the moving contact and contact guide from the bridge.
3. Remove arc chute assembly by pulling. Remove fixed contact by opening screws.

Note : The complete set of contacts needs to be changed in case of a contact replacement.

COIL REPLACEMENT



1. Switch off main power supply and control supply.
2. Remove top cover (1).
3. Remove top bridge assembly by opening quarter turn screw (2).
4. Remove coil lugs and replace coil(3).

Note : Main power cables and control cables need not be disconnected.