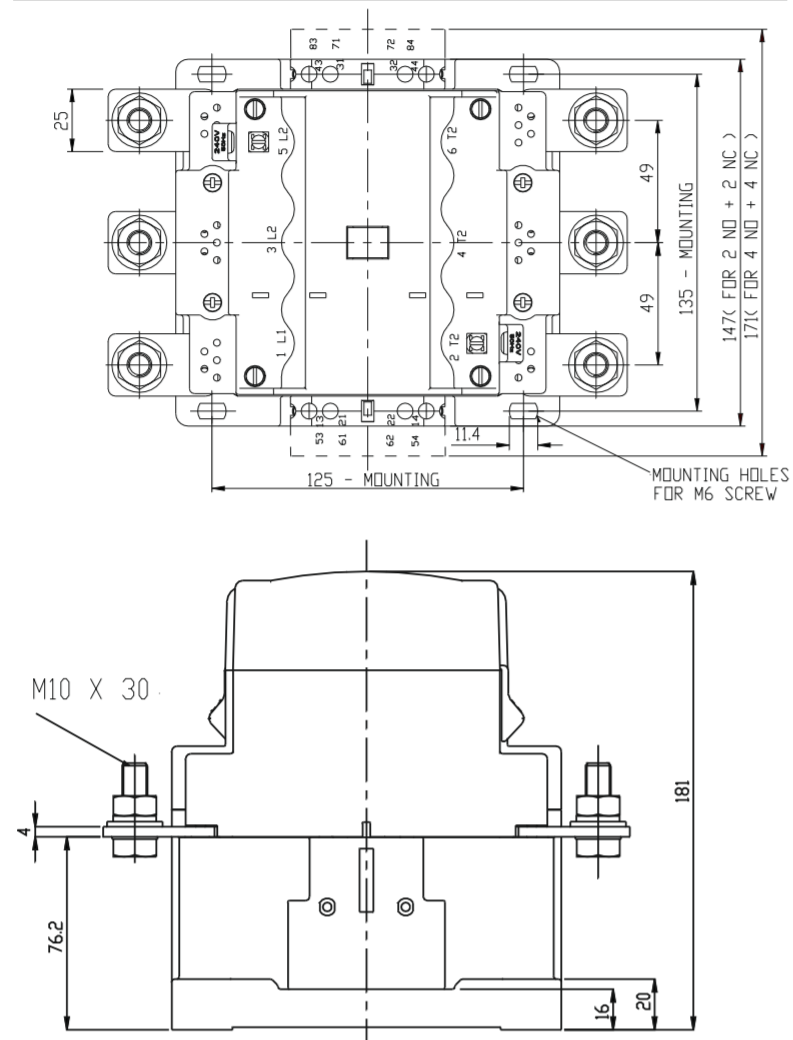


OVERALL DIMENSIONS IN mm



6

ACCESSORIES AND SPARES

AUX. CONTACT BLOCKS	MNX - A46S - 2	IN-BUILT FIRST LEFT	CS94205
		IN-BUILT FIRST RIGHT	CS94206
		ADD-ON SECOND LEFT	CS94207
		ADD-ON SECOND RIGHT	CS94208
SPARE COIL		MNX 185	CS94194
		MNX 225	CS94194
		MNX 250	CS94194
SPARE KIT		MNX 185	CS94156
		MNX 225	CS94157
		MNX 250	CS90310
MECHANICAL INTERLOCK	MNX- M55B - 0	MNX 185	CS94199
		MNX 225	CS94199
SURGE SUPPRESSOR	MNX- S45B - 0	24 - 48 V	CS94164
		110 - 240 V	CS94164
		360 - 415 V	CS94164

7

RECOMMENDED TIGHTENING TORQUE

CONTACTOR TYPE	MAIN POLE TERMINALS		TERMINALS OF AUXILIARY POLE/ COIL/ADD-ON BLOCK	
	TERMINAL SCREWS	TORQUE Nm	TERMINAL SCREWS	TORQUE Nm
MNX 185, MNX 225 MNX 250	M10	14	M3.5	1.1

CUSTOMER INTERACTION CELL (CIC)

BSNL / MTNL (Toll-Free) : 1800 233 5858
 RELIANCE (Toll-Free) : 1800 200 5858
 Telephone : 022 6774 5858
 email : cic@LNTEBG.com
 website : www.LNTEBG.com

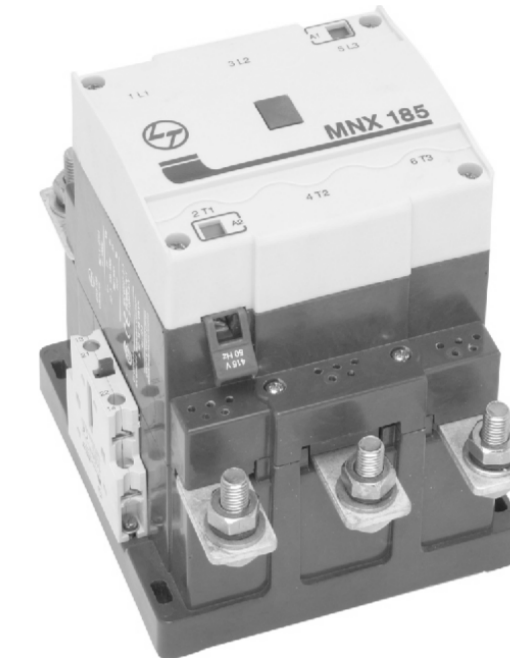


L&T Electrical & Automation, Electrical Standard Products
 L&T Business Park, TC-2, Tower B, 3rd Floor,
 Gate No. 5, Saki Vihar Road, Powai
 Mumbai - 400 072, INDIA www.Lntebg.com

SP02062



OPERATING INSTRUCTIONS



MNX 185 / MNX 225 / MNX 250 CONTACTORS

!! WARNING !!

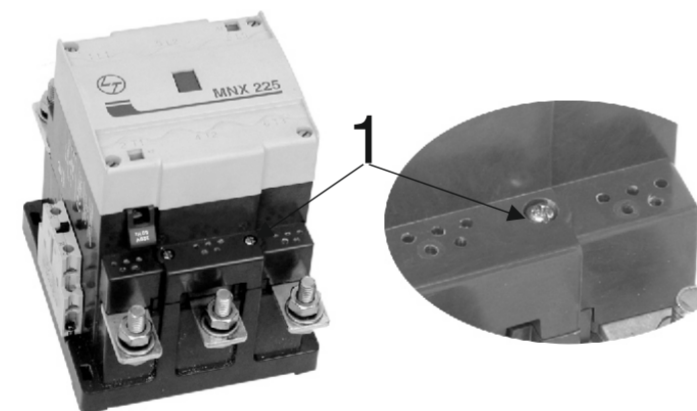


Hazardous voltage
Hazard of electrical shock and burning
 Disconnect power and isolate before proceeding with any work on this equipment.

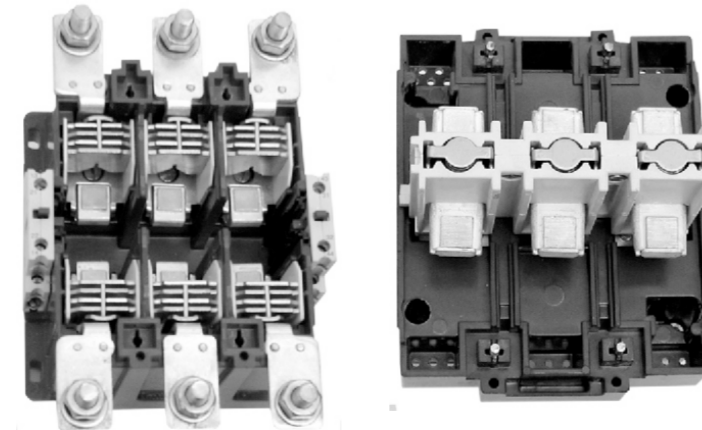
Installation, commissioning and maintenance by qualified personnel only and use according to operating instructions, professional practices, wiring rules, codes, safety regulations applicable to the given installation.

2

CONTACT INSPECTION

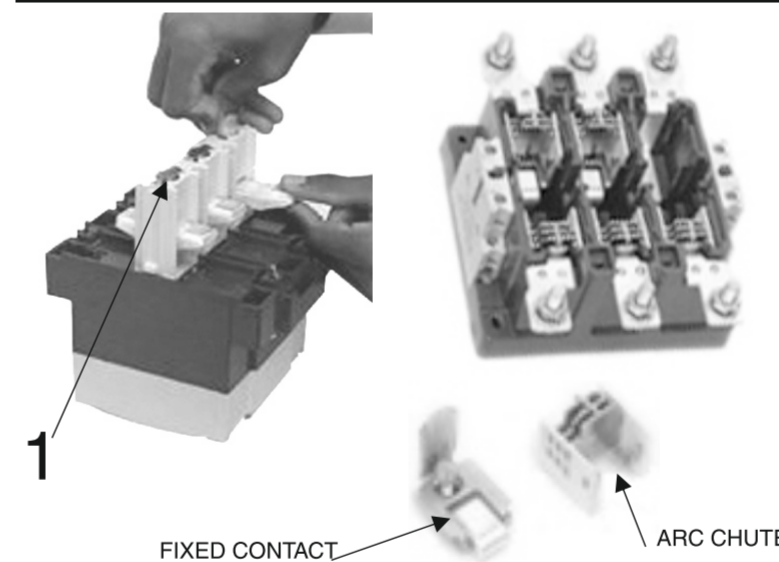


Switch off main power supply & control supply. Remove front housing (1) by opening quarter turn screws.



3

CONTACT REPLACEMENT

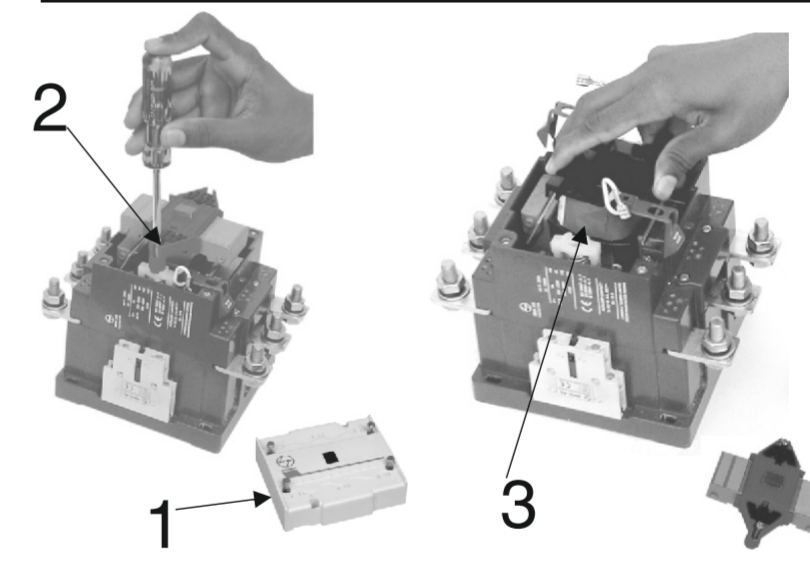


1. Remove front housing assembly by opening quarter turn screws.
2. Press contact strap(1) and remove the moving contacts.
3. Remove arc chute assembly and remove the fixed contact by opening screws.

Note : The complete set of contacts needs to be changed in case of a contact replacement.

4

COIL REPLACEMENT



1. Switch off main power supply and control supply.
2. Remove top cover (1).
3. Remove top bridge assembly by opening quarter turn screw (2).
4. Remove coil lugs and replace coil(3).

Note : Main power cables and control cables need not be disconnected.

5