





# FROM THE COO'S DESK.



**L&T Switchgear\*** IS NOW  
**Business**



Electrical & Automation

Dear Stakeholder,

**We are pleased to announce the launch of our new brand "Lauritz Knudsen Electrical & Automation" on 29th May 2024 which will replace the existing brand, L&T Switchgear.**

We sincerely thank you for your patronage & support over the last seven decades. We eagerly anticipate continuing this journey under the new name.

During this transition, the specific product names shall remain unchanged, such as MK, MU, MB, ML, MU-A, MU-2P, MF1 Starters, MD Starter+, MU-G, MR-G, MR-Gi Controllers, MU-GS SMART Controller, Px3000 Solar Drive Controller, M-Power+, M-Power++, M-Power Pro, i-PROTECTOR, Sz5, SDz5, SASDz5, WLC, SzLC, MCB-K curve, MCCB, Capacitors, Timers, Flat cables etc. Our products now feature a refreshed look that reflects our brand image and brings more consistency across our product line. However, please note that this change will not affect the ordering CAT numbers, technical parameters, and dimensions of our product range. Once the old brand material is exhausted, we will exclusively supply products under our new brand identity.

We assure you that this brand transition will be seamless, ensuring continuous availability of the products, including spares and after-sales support throughout the product's life cycle, whether under the L&T Switchgear or Lauritz Knudsen brand. Product warranties, as per our standard terms, will be honoured for products in both brands.

We kindly request you to update our new brand, Lauritz Knudsen Electrical & Automation, in your list of approved makes.

Thank you for your continued support and cooperation.

A handwritten signature in blue ink that reads 'Naresh Kumar'.

Best regards,  
Naresh Kumar,  
COO & Sr, VP, Electrical Standard Products

# WE ARE JUST A SCAN AWAY FOR ALL YOUR NEEDS.

**STEP 1** SCAN  
QR CODE

**STEP 2** SELECT  
LANGUAGE

**STEP 3** SUBMIT  
DETAILS



AGRI CUSTOMER CARE

Easily submit your service complaints, demo request, product queries and other queries.

The image shows a smartphone screen displaying a web form titled "AGRI CUSTOMER CARE". The form is titled "Contact Us" and contains several sections for user input:

- \*Mandatory Fields**
- \*Select Language**: Buttons for English, Hindi(हिंदी), Marathi(मराठी), Tamil(தமிழ்), Telugu(తెలుగు), Kannada(ಕನ್ನಡ), and Malayalam(മലയാളം). A note below says "Please select Language".
- \* First Name**: Text input field.
- \* Last Name**: Text input field.
- Email ID**: Text input field with example "eg. text@gmail.com".
- \* Mobile No.**: Text input field with example "eg. 9876543210".
- \* Address**: Text input field.
- \* Pin Code**: Text input field with example "eg. 400001".
- \* Product**: Buttons for Agri Controller, Agricultural Starter, Accessories, Spares, Digital Controller, and Others. A note below says "Please select Product".
- \* Query For**: Buttons for Complaint, Call Back, Demo request, Provide solution on application, Quotation, Authorized channel partner details required, Visit of sales engineer, and Any other request. A note below says "Please select Query".
- Any Other Message**: Text input field.
- Submit**: A button at the bottom of the form.

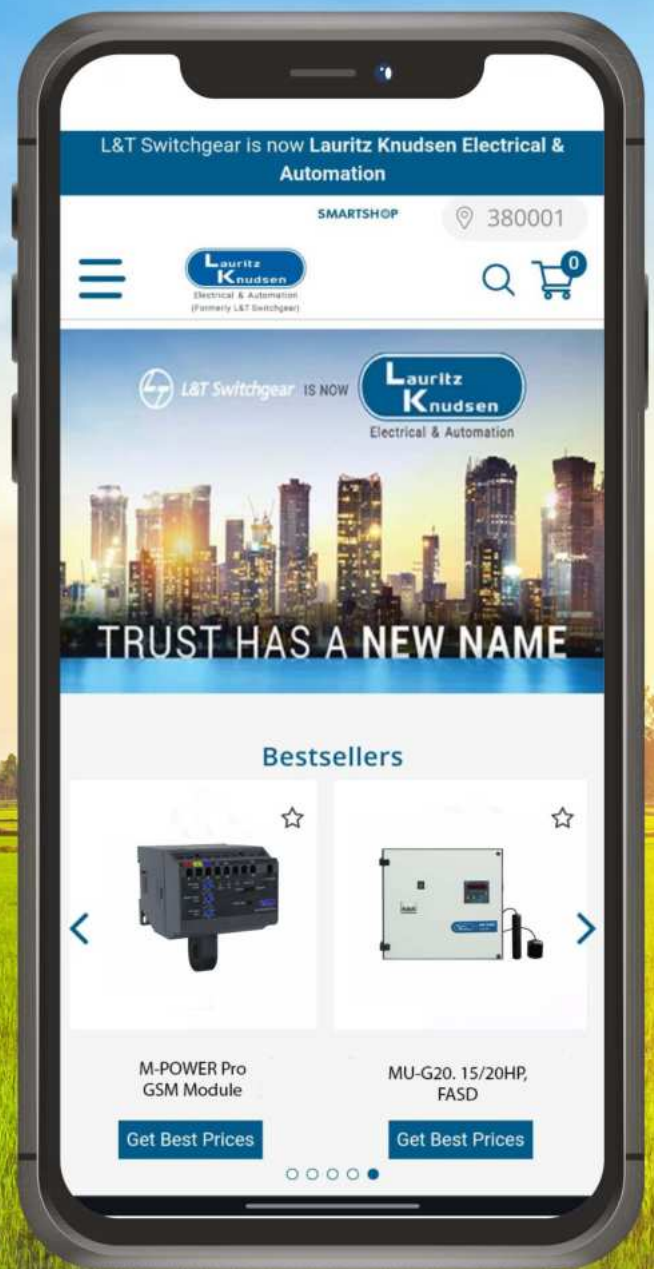


# SMARTSHOP

## SHOP SMART WHEREVER YOU ARE!



Just a Scan Away!







Connect Anywhere, Anytime...

Menu

Device type / Name

Pump status, Run time

Press here to clear current faults

Error Status / Supply Health

Press here to Call the pump / unit

Press here to access settings

Signal strength of unit

Power

Mode

Press here to switch ON / OFF the pump

Press here to update dashboard

Dashboard

Settings

System Daily Timers

Protection Facilities

System info View Users

Protection

Dry Run Protection

DRP Pick Up 90%

Phase Rev

Over Voltage

Under Voltage

Voltage Single Phasing

Voltage Unbalance

Refresh Update

Click to change individual settings

Click to update settings

Facilities

POWER ON & OFF SMS

Call after Fault

SMS after Fault

Auto Balance SMS

Miscall Facility

IVRS Facility

Status Update

Refresh Update

Click to customize individual facilities

Click to update change



One App for SMART Controller & M-POWER Pro

Convenience of technology at your finger tips for remote operation



AGRI CUSTOMER CARE  
Tel: +91-22-69327800  
E-mail: cic@LK-EA.com



SMARTSHOP  
Buy only authentic products.  
smartshop.lk-ea.com



# SMART CONTROLLER

A Complete Solution for  
Smart and Sustainable Farming



AVAILABLE UPTO 75HP



**THEFT  
PROTECTION**

of your Controller,  
Pump and Cable



**COMPLETE  
PROTECTION**

for all electrical faults  
including dry run



**REMOTE  
OPERATION**

manage your Controller  
through Call, SMS &  
Mobile App



Explore the futuristic  
technology at your fingertips  
with **SMARTCOMM App**  
Agri Connect



**AGRI CUSTOMER CARE**

Tel: +91-22-69327800  
E-mail: cic@LK-EA.com



**SMARTSHOP**

Buy only authentic products.  
smartshop.lk-ea.com

# DIGITAL SINGLE PHASE CONTROLLER

REDUCE WATER WASTAGE THROUGH AUTOMATION



## MANUAL VERSION

- Microcontroller Based Solution
- Dry Run Protection
- UV/OV Protection
- Current, Voltage Metering
- Start & Run Capacitor
- Bypass Mode
- Off Timer
- Digital Display
- Capacitor cut-off
- Automatic Current Setting



## AUTO VERSION

- All features of Manual Version
- Inbuilt Water Level Controller
- WLC bypass feature
- Auto start capacitor switching
- Power on delay
- Dry Run auto reset timer
- Auto & Manual mode
- RTC based daily ON/OFF timer
- Timer count down display
- Cyclic timer
- Time Compensation

**THE  
POWER OF  
FLEXIBILITY  
AND  
VERSATILITY**



### AGRI CUSTOMER CARE

Tel: +91-22-69327800  
E-mail: [cic@LK-EA.com](mailto:cic@LK-EA.com)



### SMARTSHOP

Buy only authentic products.  
[smartshop.lk-ea.com](http://smartshop.lk-ea.com)



# DY125U MCCB

For Your Pump Applications



## Features

- 25A to 100A, 3P, 415 V AC
- Breaking Capacity Icu-10kA (Ics = 100% Icu)
- Thermal Magnetic Release
- No Load-Line Bias
- ON-TRIP-OFF Indication
- Suitable for Isolation
- CE Marking
- Conforms to IS/IEC 60947-2, IEC 60947-2 & EN 60947-2



### AGRI CUSTOMER CARE

Tel: +91-22-69327800  
E-mail: [cic@LK-EA.com](mailto:cic@LK-EA.com)



### SMARTSHOP

Buy only authentic products.  
[smartshop.lk-ea.com](http://smartshop.lk-ea.com)



# INDEX

## OFFERINGS & COMPOSITIONS 1

### THREE PHASE STARTERS

MK1 Starters	11
MK2 Starters	14
MU/MB Starters	16
ML Starters	20
MU-Automatic DOL	23
MF1 Three Phase Starters	24
<b>NEW</b> Digital MD Starter+	26

### THREE PHASE CONTROLLERS

MU-G6 / 7.5 / 10 Three Phase Controllers	29
MU-G15 / 17.5 / 20 / 25 Three Phase Controllers	30
MU-G30 / 40 / 50 / 75 Three Phase Controllers	32
MU-G10W / 20W / 30W Three Phase Controllers	33
Digital SMART Controllers	37

### SINGLE PHASE STARTERS & CONTROLLERS

MU-2P / MF1 Single Phase Starters	43
MF-G1 Single Phase Controllers	44
MR-G2 / MR-G3 Single Phase Controller	45
MR-G2W Single Phase Controller	47
Digital MR-Gi Digital Single Phase Controllers - Manual & Auto	50

### ACCESSORIES

Digital M-POWER Pro	54
<b>NEW</b> Digital M-POWER++ / M-POWER+	55
<b>NEW</b> Digital Auto WLC	56
<b>NEW</b> Digital SASDz5	57
Digital <i>i</i> -PROTECTOR	58
MCB with K-curve	59
<b>NEW</b> DY125U MCCB	61
Power Factor Correction Capacitors	62
MFD Capacitors for Single phase application	67
Submersible Flat Cable	69

Note:

[Green colour : HSN code] Current GST 18%, subject to changes as per Govt. notification

[Orange colour : HSN code] Current GST 12%, subject to changes as per Govt. notification



# Starters and Controllers Offerings & Composition

## Offerings

HP Rating (Based On Relay Range And Maximum HP Rating)	3 Phase DOL (Direct On-Line)																		
	Starters											Automatic Starter with SPPR			Automatic MD Starter+ with <i>i</i> -PROTECTOR				
	MK1	MK2	MF1	MU1	MU1H	MB1	MU2	MB2	MU3	ML1.5	ML2	MU-1A	MU-1HA	MU-2A	MU-3A	MD1-iU	MD1H-iU	MD2-iU	MD3-iU
0.125			✓																
0.25 - 2	✓		✓																
3 - 6	✓		✓								✓								
7.5	✓	✓	✓	✓	✓	✓			✓	✓	✓				✓				
10				✓	✓	✓			✓	✓	✓	✓			✓				
12.5					✓		✓	✓	✓	✓		✓	✓			✓	✓		
15							✓	✓	✓	✓			✓	✓			✓		
17.5								✓		✓				✓					✓
20										✓									✓

HP Rating (Based On Relay Range And Maximum HP Rating)	3 Phase DOL (Direct On-Line)									
	MU-G6	MU-G7.5	Controller			Controller with WLC		SMART Controller		
			MU-G10	MU-G10HN	MU-G10H	MU-G10W	MU-G6S	MU-G10S	MU-G10HS	
0.125										
0.25 - 2										
3 - 6	✓		✓				✓	✓	✓	
7.5		✓	✓				✓		✓	
10			✓	✓	✓		✓	✓	✓	✓
12.5										
15										
17.5										
20										



# Starters and Controllers Offerings & Composition

HP Rating (Based On Relay Range And Maximum HP Rating)	3 Phase FASD (Fully Automatic Star-Delta)												
	Starters									Automatic MD Starter+ with <i>i</i> -PROTECTOR			
	MK1	MK2	MU1	MB1	ML1.5	MU2	MB2	ML2	MU3	MD1-i U	MD1H-i U	MD2-i U	MD3-i U
6 - 10	✓												
12.5	✓		✓	✓	✓			✓					
15	✓	✓	✓	✓	✓			✓		✓			
17.5													
20					✓	✓	✓	✓		✓		✓	
25					✓	✓	✓				✓	✓	
30						✓	✓	✓			✓	✓	
35								✓	✓				
40													
50													
75													

HP Rating (Based On Relay Range And Maximum HP Rating)	3 Phase FASD (Fully Automatic Star-Delta)											
	Controller										Controller with WLC	
	MU-G15	MU-G17.5	MU-G20	MU-G20HN	MU-G20H	MU-G25	MU-G30	MU-G40	MU-G50	MU-G75	MU-G20W	MU-G30W
6 - 10	✓											
12.5	✓											
15	✓		✓								✓	
17.5		✓	✓								✓	
20			✓	✓	✓		✓				✓	
25						✓	✓					
30							✓	✓	✓			✓
35								✓	✓			
40								✓	✓			
50									✓	✓		
75										✓		



# Starters and Controllers Offerings & Composition

HP Rating (Based On Relay Range And Maximum HP Rating)	3 Phase FASD (Fully Automatic Star-Delta)								
	SMART Controller								
	MU-G15S	MU-G15HS	MU-G20S	MU-G20HS	MU-G25S	MU-G30S	MU-G40S	MU-G50S	MU-G75S
6 - 10	✓		✓						
12.5	✓		✓						
15	✓	✓	✓	✓					
17.5			✓	✓					
20			✓	✓		✓			
25					✓	✓			
30						✓	✓	✓	
35							✓	✓	
40							✓	✓	
50								✓	✓
75									✓

HP Rating (Based On Relay Range And Maximum HP Rating)	3 Phase SASD (Semi Automatic Star-Delta)								
	Starters								
	MK1	MK2	MU1	MB1	MU2	MU3	MB2	ML1.5	ML2
6 - 10	✓								
12.5	✓		✓	✓				✓	✓
15	✓	✓	✓	✓					
20					✓		✓	✓	✓
25					✓		✓	✓	
30					✓		✓		✓
35						✓			✓



# Starters and Controllers Offerings & Composition

## Composition For Three Phase DOL (Direct On-Line) Starters

Relay Range (A) Starter Type		Relays used															
		1-1.6	1.5-2.5	2.5-4	4-6.5	6-10	9-14	9-15	11-18	13-21	13-22	14-23	15-25	20-32	20-33	24-38	28-42
MK1		MK1	MK1	MK1	MK1	MK1		MK1		MK1							
MK2										MK2				MK2			
MU1							MU2			MU2			MU2				
MU1H													MU2	MU2			
MU2										MU2				MU2		MU2	
MU3																MU2	MU2
MB1								MN2					MN2				
MB2												MN2			MN2		
ML1.5							ML2/3			ML2/3				ML2/3			
ML2							ML2/3			ML2/3				ML2/3			
MU-1A				MU1	MU1	MU2				MU2			MU2				
MU-1HA													MU2	MU2			
MU-2A										MU2				MU2		MU2	
MU-3A																MU2	MU2
		Contactors used															
		1-1.6	1.5-2.5	2.5-4	4-6.5	6-10	9-14	9-15	11-18	13-21	13-22	14-23	15-25	20-32	20-33	24-38	28-42
MK1		MK1	MK1	MK1	MK1	MK1		MK1		MK1							
MK2										MK2				MK2			
MU1							MU1			MU1			MU1				
MU1H													MU1H	MU1H			
MU2										MU2				MU2		MU2	
MU3																MU3	MU3
MB1								MU1					MU1				
MB2												MU2			MU2		
ML1.5							ML1.5			ML1.5				ML1.5			
ML2							ML2			ML2				ML2			
MU-1A				MU1	MU1	MU1				MU1			MU1				
MU-1HA													MU1H	MU1H			
MU-2A										MU2				MU2		MU2	
MU-3A																MU3	MU3



# Starters and Controllers Offerings & Composition

## Composition For Three Phase SASD (Semi Automatic Star-Delta) Starters

Relay Range Starter Type (A)		Relays used											
		4-6.5	6-10	9-14	9-15	11-18	13-21	13-22	14-23	20-32	20-33	24-38	28-42
MK1		MK1	MK1	MK1		MK1		MK1					
MK2								MK2		MN2			
MU1			MU2				MU2						
MU2							MU2			MU2			
MU3												MU2	MU2
MB1				MN2					MN2				
MB2									MN2		MN2		
ML1.5			ML2/3				ML2/3			ML2/3			
ML2			ML2/3				ML2/3			ML2/3			
Starter Type		Contactors used											
		4-6.5	6-10	9-14	9-15	11-18	13-21	13-22	14-23	20-32	20-33	24-38	28-42
MK1		MK1	MK1	MK1		MK1		MK1					
MK2								MK2		MK2			
MU1			MU1				MU1						
MU2							MU2			MU2			
MU3												MU3	MU3
MB1				MU1					MU1				
MB2									MU2		MU2		
ML1.5			ML2/3				ML1.5			ML1.5			
ML2			ML2/3				ML2			ML2			

# Starters and Controllers Offerings & Composition

## Composition For Three Phase FASD (Fully Automatic Star-Delta) Starters

		Relays used											
Relay Range (A)		4-6.5	6-10	9-14	9-15	11-18	13-21	13-22	14-23	20-32	20-33	24-38	28-42
Starter Type													
MK1		MK1	MK1	MK1		MK1		MK1					
MK2								MK2		MN2			
MU1				MU2			MU2						
MU2							MU2			MU2			
MU3												MU2	MU2
MB1					MN2				MN2				
MB2									MN2		MN2		
ML1.5				ML2/3			ML2/3			ML2/3			
ML2				ML2/3			ML2/3			ML2/3			
		Contactors used											
Relay Range (A)		4-6.5	6-10	9-14	9-15	11-18	13-21	13-22	14-23	20-32	20-33	24-38	28-42
Starter Type													
MK1		MK1	MK1	MK1		MK1		MK1					
MK2								MK2		MK2			
MU1				MU1			MU1						
MU2							MU2			MU2			
MU3												MU3	MU3
MB1					MU1				MU1				
MB2									MU2		MU2		
ML1.5				ML1.5			ML1.5			ML1.5			
ML2				ML2			ML2			ML2			

## Composition for MD Starter+

		MD Starter+ DOL						MD Starter+ FASD						Relay Type	i-Protector Type
Relay Range (A)		Contactors used						Contactors used							
Starter Type		9-14	13-21	15-25	20-32	24-38	28-42	9-14	13-21	15-25	20-32	24-38	28-42		
MD1-iU		MU1	MU1	MU1				MU1	MU1					MU2	i-ADSM/i-VDSM
MD1H-iU			MU1H	MU1H	MU1H					MU1H				MU2	i-ADSM/i-VDSM
MD2-iU			MU2	MU2	MU2	MU2			MU2	MU2	MU2		MU2	MU2	i-ADSM/i-VDSM
MD3-iU					MU3	MU3	MU3				MU3	MU3	MU3	MU2	i-ADSM/i-VDSM



# Starters and Controllers Offerings & Composition

## Composition For Three Phase Controllers

Controller Type	Relays used															
	Relay Range (A)	4-6.5	6-10	9-14	11-18	13-21	13-22	15-25	20-32	20-33	24-38	28-42	30-50	36-60	45-75	66-110
MU-G6		MK1	MK1	MK1												
MU-G7.5							MK2		MK2							
MU-G10		MU1	MU1	MU2		MU2										
MU-G10HN								MU2	MU2							
MU-G10H									MU2			MU2				
MU-G15			MK1	MK1	MK1			MK1								
MU-G17.5								MK2	MK2							
MU-G20				MU2		MU2										
MU-G20HN								MU2	MU2							
MU-G20H									MU2			MU2				
MU-G25											MU2	MU2				
MU-G30										MN5			MN5			
MUG40													MN5	MN5		
MU-G50													MN5		MN5	
MU-G75															MN5	MN5
MU-G10W		MU1	MU1	MU2		MU2			MU2			MU2				
MU-G20W				MU2		MU2			MU2			MU2				
MU-G30W													MN5			

# Starters and Controllers Offerings & Composition

## Composition For Three Phase Controllers

Relay Range (A) Controller Type	Contactors used														Single Phase Preventer Used	
	4-6.5	6-10	9-14	11-18	13-21	13-22	15-25	20-32	20-33	24-38	28-42	30-50	36-60	45-75		66-110
MU-G6	MK1	MK1	MK1													Sz5
MU-G7.5						MK2		MK2								Sz5
MU-G10	MU1	MU1	MU1		MU1											Sz5
MU-G10HN							MU1H	MU1H								Sz5
MU-G10H								MU2			MU2					Sz5
MU-G15		MK1	MK1	MK1		MK1										SDz5
MU-G17.5						MK2		MK2								SDz5
MU-G20			MU1		MU1											SDz5
MU-G20HN							MU1H	MU1H								SDz5
MU-G20H								MU2			MU2					SDz5
MU-G25									MU3	MU3						SDz5
MU-G30								ML2W			ML2W					SDz5
MUG40											ML3W	ML3W				SDz5
MU-G50											ML4W		ML4W			SDz5
MU-G75													ML6W	ML6W		SDz5
MU-G10W	MU1	MU1	MU1		MU1			MU2			MU2					Sz5
MU-G20W			MU1		MU1			MU2			MU2					SDz5
MU-G30W												ML2W				SDz5

## Digital Relay Ranges, Contactors & SCPD Available In SMART Controller

Digital Relay Ranges	4-22	13-32	13-42	20-42	24-42	20-50	30-60	30-75	45-90	SCPD
SMART Controller Type	Contactors used									
MU-G6S	MK1									25A 3P MCB K Curve
MU-G10S	MU1									25A 3P MCB K Curve
MU-G10HS				MU2						50A 3P MCB K Curve
MU-G15S	MK1									63A 3P MCB K Curve
MU-G15HS		MK2								100A 3P MCB K Curve
MU-G20S	*MU1	#MU1H								*63A 3P MCB K Curve #100A 3P MCB K Curve
MU-G20HS			MU2							125A 3P MCB K Curve
MU-G25S					MU3					125A 3P MCB K Curve
MU-G30S						ML2W				DZ1-160M-160A MCCB
MUG40S							ML3W			DZ1-160M-160A MCCB
MU-G50S								ML4W		DN2-250M-250A MCCB
MU-G75S									ML6W	DN2-250M-250A MCCB



# OPERATE YOUR PUMP REMOTELY WITH M-POWER++



COMPATIBLE WITH LTE 4G/ VoLTE.

OPERATE YOUR PUMP THROUGH MISSED CALL / IVRS / SMS.

REGIONAL LANGUAGES ARE AVAILABLE FOR SMS/IVRS.

COMPATIBLE WITH SINGLE PHASE AND THREE PHASE STARTERS & CONTROLLERS (DOL, SASD & FASD).



**AGRI CUSTOMER CARE**

Tel: +91-22-69327800

E-mail: [cic@LK-EA.com](mailto:cic@LK-EA.com)



**SMARTSHOP**

Buy only authentic products.  
[smartshop.lk-ea.com](http://smartshop.lk-ea.com)



# AUTOMATE YOUR SASD STARTER WITH AUTO SWITCH



Protection from **Phase Loss, Phase Reversal, Voltage Unbalance & Over Voltage**



Power on Delay Timer **30 sec to 5 minutes**  
Star Delta Timer Ranging from **3 to 30 seconds**



**Auto, Manual & OFF (Bypass) Mode Available**



Protection in both **Auto & Manual mode**

## SASDz5

2 Button SASD STARTER

3 Button SASD STARTER



**AGRI CUSTOMER CARE**

Tel: +91-22-69327800

E-mail: [cic@LK-EA.com](mailto:cic@LK-EA.com)



**SMARTSHOP**

Buy only authentic products.  
[smartshop.lk-ea.com](http://smartshop.lk-ea.com)



# MK1 Starters



## MK1 DOL Starters [HSN Code 8536]



Interior View of MK1 DOL

Suitable for Pump/ Motor 3Ø, 415V, 50Hz	Relay Range (A)	Cat. No.			Std. Pkg. (Nos.)	M.R.P. ₹ Per Unit
		Coil Voltage 360V-W (200V - 400V)	Coil Voltage 360V	Coil Voltage 400/440V		
0.25 HP	0.6 - 1			SS96210POKO	1	2665
0.5 HP	1 - 1.6		SS96210COMO	SS96210POMO	1	2665
1 HP	1.5 - 2.5		SS96210COPO	SS96210POPO	1	2665
2 HP	2.5 - 4		SS96210CORO	SS96210PORO	1	2665
4 HP	4 - 6.5	SS96210SOTO	SS96210COTO	SS96210POTO	1	2665
6 HP	6 - 10	SS96210SOVO	SS96210COVO	SS96210POVO	1	2665
7.5 HP	9 - 14	SS96210SOAO	SS96210COAO	SS96210POAO	1	2665
7.5 HP	11 - 18	SS96211SOCO	SS96211COCO	SS96211POCO	1	2734
7.5 HP	13 - 22	SS96228SODO	SS96228CODO	SS96228PODO	1	2804

Note: For Single Phase Starter application, please refer page no. 43.

## MK1 SASD Starters [HSN Code 8536]



Interior View of MK1 SASD

Suitable for Pump/ Motor 3Ø, 415V, 50Hz	Relay Range (A)	Cat. No.		Std. Pkg. (Nos.)	M.R.P. ₹ Per Unit
		Coil Voltage 360V	Coil Voltage 440V		
6 HP	4 - 6.5	SS96255COTO		1	9820
10 HP	6 - 10	SS96255COVO	SS96255POVO	1	9820
12.5 / 15 HP	9 - 14	SS96255COAO	SS96255POAO	1	9820
15 HP	11 - 18	SS96258COCO	SS96258POCO	1	9915
15 HP	13 - 22	SS96260CODO	SS96260PODO	1	10025

## MK1 FASD Starters [HSN Code 8536]



Interior View of MK1 FASD

Suitable for Pump/ Motor 3Ø, 415V 50Hz	Relay Range (A)	Cat. No.		Std. Pkg. (Nos.)	M.R.P. ₹ Per Unit
		Coil Voltage 360V	Coil Voltage 440V		
6 HP	4 - 6.5	SS96254COTO	SS96254POTO	1	10850
10 HP	6 - 10	SS96254COVO	SS96254POVO	1	10850
12.5 / 15 HP	9 - 14	SS96254COAO	SS96254POAO	1	10850
15 HP	11 - 18	SS96257COCO	SS96257POCO	1	10955
15 HP	13 - 22	SS96259CODO	SS96259PODO	1	11020

# Spares for MK1 Starters

## MK1 Spares [HSN Code 8538]



MK1 Spares

	Description	Cat. No.	Std. Pkg. (Nos.)	M.R.P. ₹ Per Unit
MK1 Spares	Spare kit with hardware (4 sets of contacts)	CS909830000	50	810
	Single moving contact	SS910090000	10	80
	Push button unit	SS900040000	1	135
	Arc shield	SS500040000	1	160
	Contact bridge without contact	SS500050000	1	145
	Aux. contact block: 1NO + 1NC	SS901200000	50	330
	Thermal timer without combination coil	SS902240000	1	895
	MK1 Cover Screw	XS000120000	1000	15

## MK1 Coil [HSN Code 8538]



MK1 Standard Operating Coil

	Description	Cat. No.	Std. Pkg. (Nos.)	M.R.P. ₹ Per Unit
MK1 Standard Operating Coil	220V	SS900440000	10	280
	230 / 250V	SS900450000	10	280
	360V	SS901650000	10	280
	400 / 440V	SS900470000	10	280
	Wide Band Coil	360V-W (200V - 400V)	SS909930000	10

## MK1 Contactors [HSN Code 8536]



MK1 Contactor

	Description	Cat. No.	Std. Pkg. (Nos.)	M.R.P. ₹ Per Unit
MK1 Contactors	220V	SS95200K000	10	1950
	230 / 250V	SS95200N000	10	1950
	360V	SS95200C000	10	1950
	360V-W (200V - 400V)	SS95200S000	10	1950
	400 / 440V	SS95200P000	10	1950

## MK1 Combination Coil [HSN Code 8538]



MK1 Combination Coil

	Description	Cat. No.	Std. Pkg. (Nos.)	M.R.P. ₹ Per Unit
MK1 Combination Coil	Combination coils for 400 / 440V	SS904430000	10	650
	Combination coils for 360V	SS904460000	10	650



## MK1 Relays [HSN Code 8536]



MK1 Relay

	Description	Cat. No.	Std. Pkg. (Nos.)	M.R.P. ₹ Per Unit
MK1 Relays	0.6 - 1A	SS9003500KO	10	1115
	1 - 1.6A	SS9003500MO	10	1115
	1.5 - 2.5A	SS9003500PO	10	1115
	2.5 - 4A	SS9003500RO	10	1115
	4 - 6.5A	SS9003500TO	10	1115
	6 - 10A	SS9003500VO	10	1115
	9 - 14A	SS9003500AO	10	1115
	11 - 18A	SS9003600CO	10	1145
	13 - 22A	SS9188800DO	10	1265



# MK2 Starters



Interior View of MK2 DOL

## MK2 DOL Starters [HSN Code 8536]

Suitable for Pump/Motor 3Ø, 415V, 50Hz	Relay Range (A)	Cat. No.			Std. .Pkg. (Nos.)	M.R.P. ₹ Per Unit
		Coil Voltage 360V-W (200V - 400V)	Coil Voltage 360V	Coil Voltage 400/440V		
7.5 HP	13 - 22	CS90947SODO	CS90947CODO	CS90947PODO	1	3220
7.5 HP	20 - 32	CS90947SOEO	CS90947COEO	CS90947POEO	1	3220

## MK2 SASD Starters [HSN Code 8536]



Interior View of MK2 SASD

Suitable for Pump/Motor 3Ø, 415V, 50Hz	Relay Range (A)	Cat. No.			Std. .Pkg. (Nos.)	M.R.P. ₹ Per Unit
		Coil Voltage 360V-W (200V - 400V)	Coil Voltage 360V	Coil Voltage 400/440V		
15 HP	13-22	CS91582SODO	CS91582CODO	CS91582PODO	1	10995
15 HP	20-32	CS91582SOEO	CS91582COEO	CS91582POEO	1	10995

## MK2 FASD Starters [HSN Code 8536]



Interior View of MK2 FASD

Suitable for Pump/Motor 3Ø, 415V, 50Hz	Relay Range (A)	Cat. No.		Std. .Pkg. (Nos.)	M.R.P. ₹ Per Unit
		Coil Voltage 360V	Coil Voltage 400/440V		
15 HP	13-22	CS91583CODO	CS91583PODO	1	12170
15 HP	20-32	CS91583COEO	CS91583POEO	1	12170



# Spares for MK2 Starters

## Spares for MK2 Starters [HSN Code 8538]



MK2 Spares

	Description	Cat. No.	Std. Pkg. (Nos.)	M.R.P. ₹ Per Unit
MK2 Spares	Spare kit with hardware (4 sets of contacts)	CS909560000	50	1145
	Single moving contact	CS909510000	10	110
	Push button unit	SS900040000	1	135
	Arc shield	CS910130000	1	165
	Contact bridge without contact	CS910140000	1	150

## MK1 / MK2 Coil [HSN Code 8538]



MK1 / MK2 Standard Operating Coil

	Description	Cat. No.	Std. Pkg. (Nos.)	M.R.P. ₹ Per Unit
MK1 / MK2 Standard Operating Coil	220V	SS900440000	10	280
	230 / 250V	SS900450000	10	280
	360V	SS901650000	10	280
	400 / 440V	SS900470000	10	280
Wide Band Coil	360V-W (200V - 400V)	SS909930000	10	310

## MK2 Contactors [HSN Code 8536]



MK2 Contactor

	Description	Cat. No.	Std. Pkg. (Nos.)	M.R.P. ₹ Per Unit
MK2 Contactors	360V	CS90945C000	10	2155
	360V-W (200V - 400V)	CS90945S000	10	2155
	400 / 440V	CS90945P000	10	2155

## MK2 Relays [HSN Code 8536]



MK2 Relay

	Description	Cat. No.	Std. Pkg. (Nos.)	M.R.P. ₹ Per Unit
MK2 Relays	13 - 22A	CS9094600D0	10	1410
	20 - 32A	CS9094600E0	10	1410



# MU / MB Starters



## MU / MB DOL Starters [HSN Code 8536]



Interior View of MU DOL

Starter Type	Suitable for Pump/Motor 3Ø, 415V, 50Hz	Relay Range (A)	Cat. No.		Std. Pkg. (Nos.)	M.R.P. ₹ Per Unit
			Coil Voltage 360V	Coil Voltage 415V		
MU1 DOL (with MU relay)	7.5 HP	9 - 14	SS95647COAO	SS95647DOAO	10	4515
	10 HP	13 - 21	SS95647COCO	SS95647DOCO	10	4680
	10 HP	15 - 25	SS95647CODO	SS95647DODO	10	4775
MU1H DOL (with MU relay)	10 HP	15 - 25	CS90622CODO	CS90622DODO	10	4995
	12.5 HP	20 - 32	CS90622COEO	CS90622DOEO	10	5265
MU2 DOL (with MU relay)	12.5 HP	13 - 21	SS95648COCO	SS95648DOCO	10	5865
	15 HP	20 - 32	SS95648COEO	SS95648DOEO	10	6270
	15 HP	24 - 38	SS95648COGO	SS95648DOGO	10	6425
MU3 DOL (with MU relay)	15 HP	24 - 38	CS90613COGO	CS90613DOGO	10	7130
	17.5 HP	28 - 42	CS90613COFO	CS90613DOFO	10	7400
MB1 DOL (with MN relay)	7.5 HP	9 - 15	SS95649COBO	SS95649DOBO	8	5265
	10 HP	14 - 23	SS95649CODO	SS95649DODO	8	5375
MB2 DOL (with MN relay)	12.5 HP	14 - 23	SS95650CODO	SS95650DODO	8	7185
	15 HP	20 - 33	SS95650COEO	SS95650DOEO	8	7515

## MU / MB SASD Starters [HSN Code 8536]



Interior View of MU SASD

Starter Type	Suitable for Pump/Motor 3Ø, 415V, 50Hz	Relay Range (A)	Cat. No.		Std. Pkg. (Nos.)	M.R.P. ₹ Per Unit
			Coil Voltage 360V	Coil Voltage 415V		
MU1 SASD (with MU relay)	12.5 HP	9 - 14	SS95891COAO	SS95891DOAO	1	12690
	15 HP	13 - 21	SS95891COCO	SS95891DOCO	1	12870
MU2 SASD (with MU relay)	20 HP	13 - 21	SS95893COCO	SS95893DOCO	1	16060
	30 HP	20 - 32	SS95893COEO	SS95893DOEO	1	16445
MU3 SASD (With MU Relay)	35 HP	24 - 38	CS91885COGO	CS91885DOGO	1	19800
	35 HP	28 - 42	CS91886COFO	CS91886DOFO	1	19980
MB1 SASD (with MN relay)	15 HP	14 - 23	SS95895CODO	SS95895DODO	1	15330
MB2 SASD (with MN relay)	20 HP	14 - 23	SS95897CODO	SS95897DODO	1	18025
	30 HP	20 - 33	SS95897COEO	SS95897DOEO	1	18455

## MU / MB FASD Starters [HSN Code 8536]



Interior View of  
MU FASD

Starter Type	Suitable for Pump/Motor 3Ø, 415V, 50Hz	Relay Range (A)	Cat. No.		Std. Pkg. (Nos.)	M.R.P. ₹ Per Unit
			Coil Voltage 360V	Coil Voltage 415V		
MU1 FASD (with MU relay)	12.5 HP	9 - 14	SS95890COAO	SS95890DOAO	1	14650
	15 HP	13 - 21	SS95890COCO	SS95890DOCO	1	14800
MU2 FASD (with MU relay)	20 HP	13 - 21	SS95892COCO	SS95892DOCO	1	17740
	30 HP	20 - 32	SS95892COEO	SS95892DOEO	1	18120
MU3 FASD (With MU Relay)	35 HP	24 - 38	CS91887COGO	CS91887DOGO	1	21670
	35 HP	28 - 42	CS91888COFO	CS91888DOFO	1	21855
MB1 FASD (with MN relay)	12.5 HP	9 - 15	SS95894COBO	SS95894DOBO	1	16245
	15 HP	14 - 23	SS95894CODO	SS95894DODO	1	16405
MB2 FASD (with MN relay)	20 HP	14 - 23	SS95896CODO	SS95896DODO	1	20125
	30 HP	20 - 33	SS95896COEO	SS95896DOEO	1	20505

**Note:** MN relay is with single phase prevention feature.



# Spares for MU / MB Starters



MU1 Contactor

## MU Contactor [HSN Code 8536]

Component	AC3 Rating	AC1 Rating	Type	Cat. No.	Std.Pkg. (Nos.)	M.R.P. ₹ Per Unit
MU1 Contactor	16A	55A	MU1 360V	CS94007C000	10	2895
			MU1 415V	CS94007D000	10	2895
MU1H Contactor	22A	55A	MU1H 360V	CS90623C000	10	3110
			MU1H 415V	CS90623D000	10	3110
MU2 Contactor	25A	63A	MU2 360V	CS94008C000	10	4215
			MU2 415V	CS94008D000	10	4215
MU3 Contactor	32A	63A	MU3 360V	CS90609C000	10	4930
			MU3 415V	CS90609D000	10	4930



MU1 Relay



MU2 Relay

## MU Relay [HSN Code 8536]

Component	Type	Cat. No.	Std.Pkg. (Nos.)	M.R.P. ₹ Per Unit
MU1 Relay	4 - 6.5A	SS9655700TO	1	1420
	6 - 10A	SS9655700VO	1	1420
MU2 Relay	9 - 14A	SS9597900AO	1	1620
	13 - 21A	SS9597900CO	1	1715
	15 - 25A	SS9597900DO	1	1865
	20 - 32A	SS9597900EO	1	2120
	24 - 38A	SS9597900GO	1	2305
	28 - 42A	SS9597900FO	1	2495

## MU Contactor Spares [HSN Code 8538]



MU Contact Bridge



MU ADD-ON Block

Type	Cat. No.	Std.Pkg. (Nos.)	M.R.P. ₹ Per Unit
MU1 contact bridge	CS949940000	10	170
MU1H contact bridge	CS910990000	10	170
MU2 contact bridge	CS949940000	10	170
MU3 contact bridge	CS910960000	10	170
MU1 single moving contact	CS949950000	1	175
MU1H single moving contact	CS911020000	1	245
MU2 single moving contact	CS949960000	1	345
MU3 single moving contact	CS911030000	1	455
MU-Add ON Block - 1NO + 1NC (LHS)	SS940720000	10	345
ADD-ON Block MU-A1 (1NC) (Left)	SS940740000	10	270



## Spares For MU / MB [HSN Code 8538]



MU Spare Kit



MU Coil



MU Spare Housing



Relay Extension Knob

Component	Type	Cat. No.	Std.Pkg. (Nos.)	M.R.P. ₹ Per Unit
Spare Kit	MU1	CS940100000	1	1210
	MU1H	CS906240000	1	1570
	MU2	CS940110000	1	2235
	MU3	CS906120000	1	2740
MU Coils	240V	CS94009B000	10	695
	360V	CS94009C000	10	695
	415V	CS94009D000	10	695
Spare RelayExtension Knob (Pack of 20 Nos.)	MU1	CS943360000	1	160
	MU2	CS943370000	1	160
Spare Housing	MU1	CS949980000	10	350
	MU1H	CS910980000	10	350
	MU2	CS949990000	10	350
	MU3	CS910600000	10	350



# ML Starters



## ML DOL Starters [HSN Code 8536]



Interior View of ML DOL

Starter Type	Suitable for Pump/Motor 3Ø, 415V, 50Hz	Relay Range (A)	Cat. No.		Std. Pkg. (Nos.)	M.R.P. ₹ Per Unit
			Coil Voltage 360V	Coil Voltage 440V		
ML1.5 DOL	7.5 HP	9 - 14	SS91854COAO	SS91854POAO	1	8595
	12.5 HP	13 - 21	SS91854COCO	SS91854POCO	1	8595
	15 HP	20 - 32	SS91854COEO	SS91854POEO	1	8595
ML2 DOL (Heavy duty)	7.5 HP	9 - 14		SS90702POAO	1	14810
	10/12.5 HP	13 - 21	SS90702COCO	SS90702POCO	1	14810
	20 HP	20 - 32	SS90702COEO	SS90702POEO	1	14810

## ML SASD Starters [HSN Code 8536]



Interior View of ML SASD

Starter Type	Suitable for Pump/Motor 3Ø, 415V, 50Hz	Relay Range (A)	Cat. No.		Std. Pkg. (Nos.)	M.R.P. ₹ Per Unit
			Coil Voltage 360V	Coil Voltage 440V		
ML1.5 SASD	20 HP	13 - 21	SS91856COCO	SS91856POCO	1	21065
	25 HP	20 - 32	SS91856COEO	SS91856POEO	1	21065
ML2 SASD (Heavy duty)	20 HP	13 - 21	SS90707COCO	SS90707POCO	1	37195
	35 HP	20 - 32	SS90707COEO	SS90707POEO	1	37195

## ML FASD Starters [HSN Code 8536]



Interior View of ML FASD

Starter Type	Suitable for Pump/Motor 3Ø, 415V, 50Hz	Relay Range (A)	Cat. No.		Std. Pkg. (Nos.)	M.R.P. ₹ Per Unit
			Coil Voltage 360V	Coil Voltage 440V		
ML1.5 FASD	12.5 HP	9 - 14	SS91855COAO	SS91855POAO	1	23865
	20 HP	13 - 21	SS91855COCO	SS91855POCO	1	23865
	25 HP	20 - 32	SS91855COEO	SS91855POEO	1	23865
ML2 FASD (Heavy duty)	12.5 HP	9 - 14		SS90705POAO	1	38610
	20 HP	13 - 21	SS90705COCO	SS90705POCO	1	38610
	35 HP	20 - 32	SS90705COEO	SS90705POEO	1	38610

# Spares for ML Starters



ML1.5 Contactor



ML2W Contactor



Standard Operating Coil ML1.5



Standard Operating Coil ML2 / ML3



Standard Operating Coil ML4 / ML4W



Spare kit

## ML Contactor [HSN Code 8536]

Component	Type	AC3 Rating (A)	AC1 Rating (A)	Aux. Contacts	Cat. No.	Std. Pkg. (Nos.)	M.R.P. ₹ Per Unit
ML Contactor	ML1.5	25	25	2 NO + 2 NC	SS91851C000	1	4490
	ML2W	32	40	2 NO + 2 NC	CS96005L000	1	8720
	ML3W	40	45	2 NO + 2 NC	CS90907L000	1	13100
	ML4W	70	100	2 NO + 2 NC	CS96006L000	1	21400
	ML6W	110	125	2 NO + 2 NC	CS90168L000	1	34500

## ML Coil [HSN Code 8538]

Component	Voltage	Cat. No.	Std. Pkg. (Nos.)	M.R.P. ₹ Per Unit
Standard Operating Coils for ML1.5	240V	SS90873B000	10	925
	360V	SS90873C000	10	925
	380V	SS90873L000	10	925
	440V	SS90873P000	10	925
Standard Operating Coils for ML2/ML2W/ML3/ML3W Contactor	240V	SS90545B000	10	1700
	360V	SS90545C000	10	1700
	380V	SS90545L000	10	1700
	440V	SS90545P000	10	1700
Standard Operating Coils for ML4/ML4W Contactor	240V	SS91258B000	10	3250
	360V	SS91258C000	10	3250
	380V	SS91258L000	10	3250
	440V	SS91258P000	10	3250

## ML1.5 [HSN Code 8538]

Spare kit without coil	ML1.5	SS953050000	50	2320
Moving contacts kit	ML1.5	SS928170000	10	760
Front Housing & Moving Bridge kit	ML1.5	ST287340000	10	840

## ML2 [HSN Code 8538]

Spare kit without coil	ML2	SS953070000	10	4240
Moving contacts kit	ML2	SS928180000	10	1150
Front Housing & Moving Bridge kit	ML2	ST238660000	10	1150



## ML Relay [HSN Code 8536]



ML1 Relay



ML2 / ML3 Relay

Type of Mounting (Operation)	Relay Range (A)	Cat. No.	Std.Pkg. (Nos.)	M.R.P. ₹ Per Unit
<b>ML1</b>				
(Directly Operated)	4 - 6.5	SS9185800TO	10	3110
Direct Mounting	6 - 10	SS9185800VO	10	3110
	10 - 16	SS9185800BO	10	3110
<b>ML2 / ML3</b>				
(Directly Operated)	9 - 14	SS9185900AO	2	4590
Direct Mounting	13 - 21	SS9185900CO	2	4590
	20 - 32	SS9185900EO	2	4590
	28 - 42	SS9185900FO	2	4590



# MU-Automatic DOL Starters

Now available with emergency OFF rocker switch



## MU-Automatic DOL Starter [HSN Code 8536]



Interior View of MU-A DOL

Starter Type	Suitable for Pump/Motor 3Ø, 415V, 50Hz	Relay Range (A)	Cat. No.		Std.Pkg. (Nos.)	M.R.P. ₹ Per Unit
			Coil Voltage 360V	Coil Voltage 415V		
MU-1A DOL (with Sz5 SPPR)	3 HP	4 - 6.5	CS90898COTO	CS90898DOTO	1	6460
	5 HP	6 - 10	CS90898COVO	CS90898DOVO	1	6460
	7.5 HP	9 - 14	CS90898COAO	CS90898DOAO	1	6575
	10 HP	13 - 21	CS90898COCO	CS90898DOCOC	1	6690
	10 HP	15 - 25	CS90898CODO	CS90898DODO	1	6825
MU-1HA DOL (with Sz5 SPPR)	10 HP	15 - 25	CS90899CODO	CS90899DODO	1	6985
	12.5 HP	20 - 32	CS90899COEO	CS90899DOEO	1	7195
MU-2A DOL (with Sz5 SPPR)	12.5 HP	13 - 21	CS90900COCO		1	7920
	15 HP	20 - 32	CS90900COEO	CS90900DOEO	1	8240
	15 HP	24 - 38	CS90900COGO	CS90900DOGO	1	8375
MU-3A DOL (with Sz5 SPPR)	15 HP	24 - 38	CS90901COGO	CS90901DOGO	1	8790
	17.5 HP	28 - 42	CS90901COFO	CS90901DOFO	1	8995



# MF1 Three Phase Starters



## MF1 Three Phase Starters [HSN Code 8536]



Interior View of  
MF1 DOL - 3Ø Starter

Suitable for Pump/Motor 3Ø, 415V, 50Hz	Relay Range (A)	Cat. No.	Std.Pkg. (Nos.)	M.R.P. ₹ Per Unit
0.125 HP	0.4 - 0.65	SS9721000HO	1	2295
0.25 HP	0.6 - 1	SS9721000KO	1	2295
0.5 HP	1 - 1.6	SS9721000MO	1	2295
1.25 HP	1.5 - 2.5	SS9721000PO	1	2295
2 HP	2.5 - 4	SS9721000RO	1	2295
4 HP	4 - 6.5	SS9721000TO	1	2295
6 HP	6 - 10	SS9721000VO	1	2295
7.5 HP	9 - 15	SS9721000BO	1	2295
7.5 HP	11 - 18	SS9721000CO	1	2295





# STARTER+ AUTOMATIC OPERATION WITH EXTRA PROTECTIONS

## FEATURES



Dry Run Protection



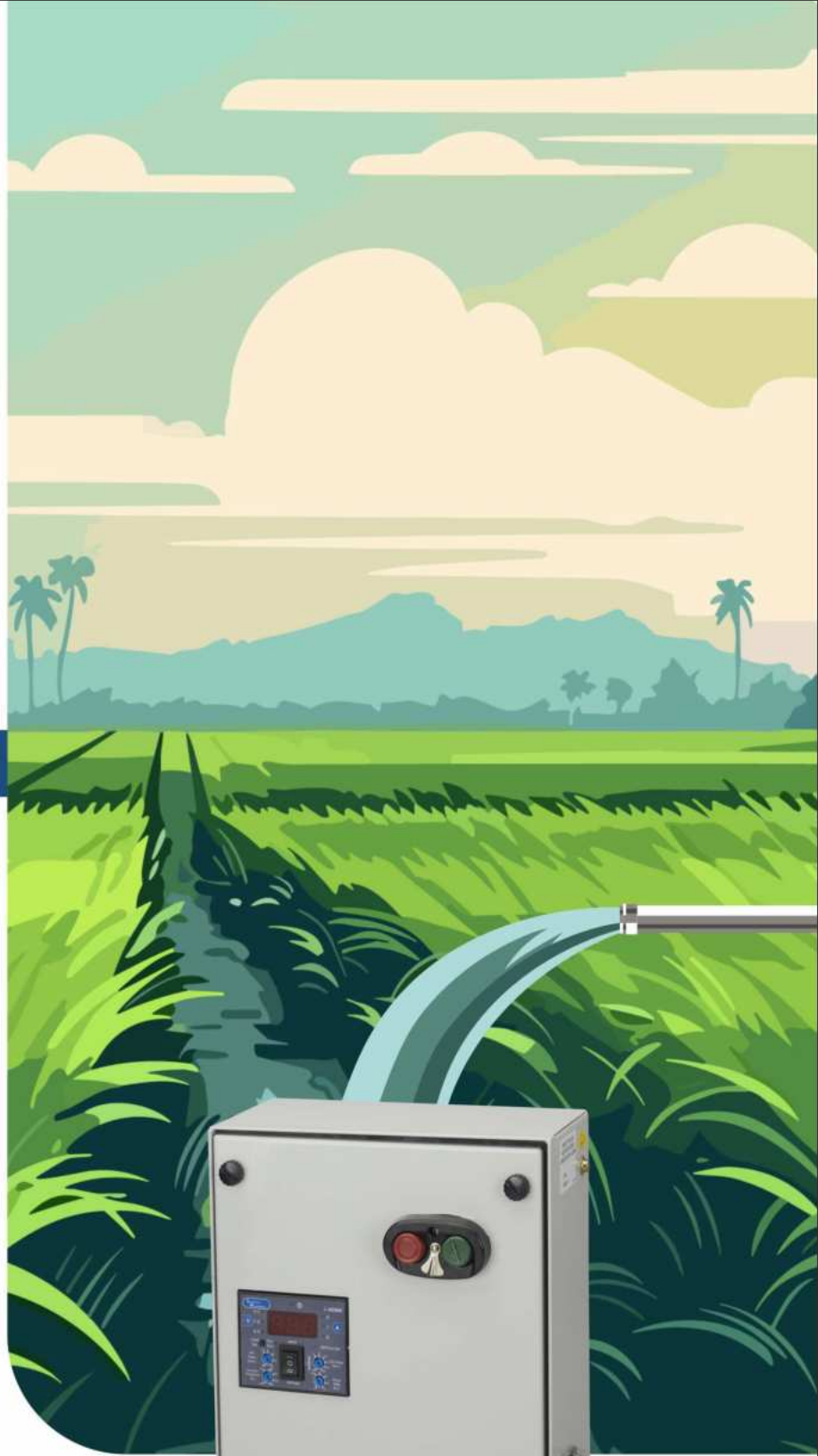
Current/ Voltage Based  
Protections : Phase Loss,  
Phase Unbalance,  
Phase Reversal



Undervoltage &  
Overvoltage Protection



Digital Metering,  
On Delay Timer,  
Star Delta Timer



**MD Starter+ DOL**

With *i*-ADSM – Current Sensing-Based Protection  
With *i*-VDSM – Voltage Sensing-Based Protection



**AGRI CUSTOMER CARE**

Tel: +91-22-69327800

E-mail: [cic@LK-EA.com](mailto:cic@LK-EA.com)



**SMARTSHOP**

Buy only authentic products.  
[smartshop.lk-ea.com](http://smartshop.lk-ea.com)

# MD Starter+



**NEW** MD Starter+ DOL [HSN CODE 8536]

Starter Type	Suitable for Pump/ Motor (3Ø, 415V, 50Hz)	i-PROTECTOR	Relay Range (A)	Cat. No.		Std. Pkg. (Nos.)	M.R.P. ₹ Per Unit
				Coil Voltage 360 V	Coil Voltage 415 V		
MD1-iU	7.5 HP	i-ADSM	9-14	CS91753COAO	CS91753DOAO	1	8795
MD1-iU	10 HP	i-ADSM	13-21	CS91753COCO	CS91753DOCO	1	8845
MD1H-iU	12.5 HP	i-ADSM	13-21	CS91754COCO	CS91754DOCO	1	9020
MD2-iU	12.5 HP	i-ADSM	13-21	CS91755COCO	CS91755DOCO	1	9895
MD1-iU	10 HP	i-ADSM	15-25	CS91753CODO	CS91753DODO	1	8930
MD1H-iU	12.5 HP	i-ADSM	15-25	CS91754CODO	CS91754DODO	1	9125
MD2-iU	12.5 HP	i-ADSM	15-25	CS91755CODO	CS91755DODO	1	9975
MD1H-iU	12.5 HP	i-ADSM	20-32	CS91754COEO	CS91754DOEO	1	9265
MD2-iU	15 HP	i-ADSM	20-32	CS91755COEO	CS91755DOEO	1	10090
MD3-iU	17.5 HP	i-ADSM	20-32	CS91756COEO	CS91756DOEO	1	10540
MD2-iU	15 HP	i-ADSM	24-38	CS91755COGO	CS91755DOGO	1	10175
MD3-iU	17.5 HP	i-ADSM	24-38	CS91756COGO	CS91756DOGO	1	10605
MD3-iU	20 HP	i-ADSM	28-42	CS91756COFO	CS91756DOFO	1	10680
MD1-iU	7.5 HP	i-VDSM	9-14	CS91757COAO	CS91757DOAO	1	8795
MD1-iU	10 HP	i-VDSM	13-21	CS91757COCO	CS91757DOCO	1	8845
MD1H-iU	12.5 HP	i-VDSM	13-21	CS91758COCO	CS91758DOCO	1	9020
MD2-iU	12.5 HP	i-VDSM	13-21	CS91759COCO	CS91759DOCO	1	9895
MD1-iU	10 HP	i-VDSM	15-25	CS91757CODO	CS91757DODO	1	8930
MD1H-iU	12.5 HP	i-VDSM	15-25	CS91758CODO	CS91758DODO	1	9125
MD2-iU	12.5 HP	i-VDSM	15-25	CS91759CODO	CS91759DODO	1	9975
MD1H-iU	12.5 HP	i-VDSM	20-32	CS91758COEO	CS91758DOEO	1	9265
MD2-iU	15 HP	i-VDSM	20-32	CS91759COEO	CS91759DOEO	1	10090
MD3-iU	17.5 HP	i-VDSM	20-32	CS91760COEO	CS91760DOEO	1	10540
MD2-iU	15 HP	i-VDSM	24-38	CS91759COGO	CS91759DOGO	1	10175
MD3-iU	17.5 HP	i-VDSM	24-38	CS91760COGO	CS91760DOGO	1	10605
MD3-iU	20 HP	i-VDSM	28-42	CS91760COFO	CS91760DOFO	1	10680



Interior View of MD Starter+ DOL Starter

**NEW** MD Starter+ FASD [HSN CODE 8536]

Starter Type	Suitable for Pump/ Motor (3Ø, 415V, 50Hz)	i-PROTECTOR	Relay Range (A)	Cat. No.		Std. Pkg. (Nos.)	M.R.P. ₹ Per Unit
				Coil Voltage 360 V	Coil Voltage 415 V		
MD1-iU	15 HP	i-ADSM	9-14	CS91778COAO*	CS91778DOAO*	1	17690
MD1-iU	20 HP	i-ADSM	13-21	CS91778COCO	CS91778DOCO	1	17890
MD1H-iU	25 HP	i-ADSM	15-25	CS91779COEO	CS91779DOEO	1	18695
MD2-iU	25 HP	i-ADSM	15-25	CS91780CODO	CS91780DODO	1	21780
MD2-iU	20 HP	i-ADSM	13-21	CS91780COCO	CS91780DOCO	1	21605
MD2-iU	30 HP	i-ADSM	20-32	CS91780COEO	CS91780DOEO	1	22045
MD2-iU	30 HP	i-ADSM	28-42	CS91780COFO*	CS91780DOFO*	1	22540
MD3-iU	30 HP	i-ADSM	20-32	CS91781COEO	CS91781DOEO	1	24485
MD3-iU	30 HP	i-ADSM	24-38	CS91781COGO	CS91781DOGO	1	24760
MD3-iU	30 HP	i-ADSM	28-42	CS91781COFO	CS91781DOFO	1	24925
MD1-iU	15 HP	i-VDSM	9-14	CS91768COAO	CS91768DOAO	1	17690
MD1-iU	20 HP	i-VDSM	13-21	CS91768COCO	CS91768DOCO	1	17890
MD2-iU	20 HP	i-VDSM	13-21	CS91783COCO	CS91783DOCO	1	21605
MD1H-iU	25 HP	i-VDSM	15-25	CS91782COEO	CS91782DOEO*	1	18695
MD2-iU	25 HP	i-VDSM	15-25	CS91783CODO	CS91783DODO	1	21780
MD2-iU	30 HP	i-VDSM	20-32	CS91783COEO	CS91783DOEO	1	22045
MD2-iU	30 HP	i-VDSM	28-42	CS91783COFO	CS91783DOFO*	1	22540
MD3-iU	30 HP	i-VDSM	20-32	CS91784COEO	CS91784DOEO*	1	24485
MD3-iU	30 HP	i-VDSM	24-38	CS91784COGO	CS91784DOGO	1	24760
MD3-iU	30 HP	i-VDSM	28-42	CS91784COFO	CS91784DOFO	1	24925

**Note:** \* Upcoming Cat. Nos.





# Px3000

## Solar Drive Controller

## EMPOWERING GREEN IRRIGATION SOLUTIONS



True MPPT



Robust design to handle high input DC voltage up to 850V



Grid Compatible



Auto & Adaptable MPPT



Rugged design, best-in-class performance even at 50 degrees ambient without derating



Built-in RS485



Plug & Play Drive



Automatic Start & Stop



Wide operating range –  
Vmpp Range: 250V~750Vdc  
Voc Range: 300V~ 850Vdc



[HSN Code 8504]

Px3000 Solar Drive Controller	Cat. No.
5 HP	EAVF-P4009P5BAA
7.5 HP	EAVF-P4014P0BAA
10 HP	EAVF-P4018P0BAA



AGRI CUSTOMER CARE

Tel: +91-22-69327800

E-mail: cic@LK-EA.com



SMARTSHOP

Buy only authentic products.  
smartshop.lk-ea.com

# MU-G6 / 7.5 / 10 Three Phase Submersible Pump Controllers (with Single Phase Preventer)



## MU-G6 DOL (With Wideband Coil) [HSN Code 8536]



Interior View of MU-G6 DOL

Type	Maximum Submersible Pump Rating at 3Ø, 415V, 50Hz	Relay Range (A)	Coil Voltage	Cat. No.	Std. Pkg. (Nos.)	M.R.P. ₹ Per Unit
MU-G6 DOL	3 HP	4 - 6.5	360V-W (200V-400V)	SS97756COTO	1	8135
	5 HP	6 - 10	360V-W (200V-400V)	SS97756COVO	1	8135
	6 HP	9 - 14	360V-W (200V-400V)	SS97756COAO	1	8135

## MU-G7.5 DOL (With Wideband Coil) [HSN Code 8536]



Interior View of MU-G7.5 DOL

Type	Maximum Submersible Pump Rating at 3Ø, 415V, 50Hz		Relay Range (A)	Coil Voltage	Cat. No.	Std. Pkg. (Nos.)	M.R.P. ₹ Per Unit
	HP	KW					
MU-G7.5 DOL	7.5	5.5	13 - 22	360V-W (200V - 400V)	CS92103SODO	1	8615
	7.5	5.5	20 - 32	360V-W (200V - 400V)	CS92103SOEO	1	8615

## MU-G10 DOL (With Wideband Coil) [HSN Code 8536]



Interior View of MU-G10 DOL

Type	Maximum Submersible Pump Rating at 3Ø, 415V, 50Hz		Relay Range (A)	Cat. No.		Std. Pkg. (Nos.)	M.R.P. ₹ Per Unit
	HP	kW		Coil Voltage 360V	Coil Voltage 415V		
MU-G10 DOL	3	2.2	4 - 6.5	SS95983COTO	SS95983DOTO	1	9400
	5	3.7	6 - 10	SS95983COVO	SS95983DOVO	1	9400
	6	4.5	9 - 14	SS95983COAO	SS95983DOAO	1	9540
	7.5/10	5.5/7.5	13 - 21	SS95983COCO	SS95983DOCOCO	1	9665
MU-G10HN DOL	10	7.5	15-25	CS92102CODO	CS92102DODO	1	9795
	10	7.5	20-32	CS92102COEO	CS92102DOEO	1	9970
MU-G10H DOL (Heavy duty)	10	7.5	20 - 32	SS95974COEO	SS95974DOEO	1	10875
	10	7.5	28 - 42	SS95974COFO	SS95974DOFO	1	11210

# MU-G15 / 17.5 / 20 / 25 Three Phase Submersible Pump Controllers (with Single Phase Preventer)



## MU-G15 FASD (With Wideband Coil) [HSN Code 8536]



Interior View of MU-G15 FASD

Type	Maximum Submersible Pump Rating at 3Ø, 415V, 50Hz		Relay Range (A)	Cat. No.		Std.Pkg. (Nos.)	M.R.P. ₹ Per Unit
	HP	kW		Coil Voltage 360V-W (200V - 400V)			
MU-G15 FASD	7.5	5.5	6 - 10	CS94091SOVO		1	15770
	10	7.5	9 - 14	CS94091SOAO		1	15770
	15	11	11 - 18	CS94091SOCO		1	15910
	15	11	13 - 22	CS94091SODO		1	15985

## MU-G17.5 FASD (With Wideband Coil) [HSN Code 8536]



Interior View of MU-G17.5 FASD

Type	Suitable for Pump/Motor 3Ø, 415V, 50Hz	Relay Range (A)	Cat. No.		Std.Pkg. (Nos.)	M.R.P. ₹ Per Unit
	HP		Coil Voltage 360V-W (200V - 400V)			
MU-G17.5 FASD	17.5	13 - 22	CS91880SODO		1	17400
	17.5	20 - 32	CS91880SOEO		1	17400

## MU-G20 FASD (With Wideband Coil) [HSN Code 8536]



Interior View of MU-G20 FASD

Type	Maximum Submersible Pump Rating at 3Ø, 415V, 50Hz		Relay Range (A)	Cat. No.		Std.Pkg. (Nos.)	M.R.P. ₹ Per Unit
	HP	kW		Coil Voltage 360V	Coil Voltage 415V		
	MU-G20 FASD	10		7.5	9 - 14		
15/20		11/15	13 - 21	SS95984COCO	SS95984DOCO	1	18530
MU-G20HN FASD	20	15	15-25	CS92101CODO	CS92101DODO	1	19235
	20	15	20-32	CS92101COEO	CS92101DOEO	1	19500
MU-G20H FASD (Heavy duty)	20	15	20 - 32	SS95975COEO	SS95975DOEO	1	22860
	20	15	28 - 42	SS95975COFO	SS95975DOFO	1	23345



## MU-G25 FASD (With Wideband Coil) [HSN Code 8536]



Interior View of  
MU-G25 FASD

Type	Maximum Submersible Pump Rating at 3Ø, 415V, 50Hz HP	Relay Range (A)	Cat. No.		Std.Pkg. (Nos.)	M.R.P. ₹ Per Unit
			Coil Voltage 360V	Coil Voltage 415V		
MU-G25 FASD	25	24 - 38	CS91969COGO	CS91969DOGO	1	<b>26370</b>
	25	28 - 42	CS91969COFO	CS91969DOFO	1	<b>26570</b>



# MU-G30 / 40 / 50 / 75 Three Phase Submersible Pump Controllers (with Single Phase Preventer)



With ML Contactor & MN5 Relay

## MU-G30 FASD (With Wideband Coil) [HSN Code 8536]



Interior View of MU-G30 FASD

Type	Maximum Submersible Pump Rating at 3Ø, 415V, 50Hz	Relay Range (A)	Coil Voltage	Cat. No.	Std. Pkg. (Nos.)	M.R.P ₹ Per Unit
MU-G30 FASD	20 HP	20 - 33	380V	CS96008COEO	1	36390
	30 HP	30 - 50	380V	CS96008COGO	1	37250

## MU-G40 FASD (With Wideband Coil) [HSN Code 8536]



Interior View of MU-G40 FASD

Type	Maximum Submersible Pump Rating at 3Ø, 415V, 50Hz	Relay Range (A)	Coil Voltage	Cat. No.	Std. Pkg. (Nos.)	M.R.P ₹ Per Unit
MU-G40 FASD	30 HP	30 - 50	380V	CS90908LOGO	1	44190
	40 HP	36 - 60	380V	CS90908LOTO	1	44925

## MU-G50 FASD (With Wideband Coil) [HSN Code 8536]



Interior View of MU-G50 FASD

Type	Maximum Submersible Pump Rating at 3Ø, 415V, 50Hz	Relay Range (A)	Coil Voltage	Cat. No.	Std. Pkg. (Nos.)	M.R.P ₹ Per Unit
MU-G50 FASD	30 HP	30 - 50	380V	CS96009COGO	1	58970
	50 HP	45 - 75	380V	CS96009COJO	1	60750

## MU-G75 FASD (With Wideband Coil) [HSN Code 8536]



Interior View of MU-G75 FASD

Type	Maximum Submersible Pump Rating at 3Ø, 415V, 50Hz	Relay Range (A)	Coil Voltage	Cat. No.	Std. Pkg. (Nos.)	M.R.P ₹ Per Unit
MU-G75 FASD	50 HP	45 - 75	380V	CS96451LOJO	1	84300
	75 HP	66 - 110	380V	CS96451LOKO	1	84300

# MU-G 10W / 20W / 30W Three Phase Submersible Controllers (with WLC & SPPR)



## MU-G10W DOL (With Wideband Coil) [HSN Code 8536]

Type	Maximum Submersible Pump Rating at 3Ø, 415V, 50Hz		Relay Range (A)	Cat. No.		Std.Pkg. (Nos.)	M.R.P ₹ Per Unit
	HP	kW		Coil Voltage 360V	Coil Voltage 415V		
MU-G10W DOL with in-built WLC	3	2.2	4 - 6.5	CS91037COTO	CS91037DOTO	1	13110
	5	3.7	6 - 10	CS91037COVO	CS91037DOVO	1	13110
	7.5	5.5	9 - 14	CS91037COAO	CS91037DOAO	1	13270
MU-G10W DOL (Heavy duty) with in-built WLC	10	7.5	13 - 21	CS91037COCO	CS91037DOCOC	1	13385
	10	7.5	20 - 32		CS91037DOEO	1	14800
	10	7.5	28 - 42	CS91037COFO		1	15125

## MU-G20W FASD (With Wideband Coil) [HSN Code 8536]

Type	Maximum Submersible Pump Rating at 3Ø, 415V, 50Hz		Relay Range (A)	Cat. No.		Std.Pkg. (Nos.)	M.R.P ₹ Per Unit
	HP	kW		Coil Voltage 360V	Coil Voltage 415V		
MU-G20W FASD with in-built WLC	15	11	9 - 14		CS91038DOAO	1	22790
	20	15	13 - 21	CS91038COCO	CS91038DOCOC	1	22890
MU-G20W FASD (Heavy duty) with in-built WLC	20	15	20 - 32	CS91038COEO	CS91038DOEO	1	26765
	20	15	28 - 42		CS91038DOFO	1	27300

## MU-G30W FASD (With Wideband Coil) [HSN Code 8536]

Type	Maximum Submersible Pump Rating at 3Ø, 415V, 50Hz	Relay Range (A)	Coil Voltage	Cat. No.	Std.Pkg. (Nos.)	M.R.P ₹ Per Unit
MU-G30W FASD with in-built WLC	30 HP	30 - 50	380V	CS91039COGO	1	42485



# Spares for MU-G Submersible Pump Controllers



## Terminal Block [HSN Code 8538]

Description	Cat. No.	Std. Pkg. (Nos.)	M.R.P ₹ Per Unit
Terminal Block 30A - 5 way (For MR-G2)	CS960320000	1	250
Terminal Block 60A - 3 way (For MU-G10/20)	CS948060000	1	205
Terminal Block 100A - 3 way (For MU-G30/50)	CS943380000	1	1235
Terminal Block 125A - 3 way (For MU-G75)	CS901720000	1	4540



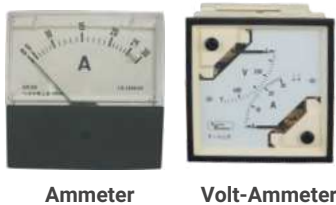
## Indicating lamp [HSN Code 8531]

Description	Cat. No.	Std. Pkg. (Nos.)	M.R.P ₹ Per Unit
Indicating lamp Red 415V	CS94810D000	1	335
Indicating lamp Green 415V	CS94812D000	1	335
Spare Lamp, MR-G Controller	CS961260000	1	80



## Rocker switch [HSN Code 8538]

Description	Cat. No.	Std. Pkg. (Nos.)	M.R.P ₹ Per Unit
Rocker switch (For MU-G6 to MU-G20)	CS902840000	1	90
Rocker switch (For MU-G30 to MU-G75)	CS902720000	1	150
Voltage selector switch	CS943350000	1	470



## Volt-Ammeter [HSN Code 9030]

Description	Cat. No.	Std. Pkg. (Nos.)	M.R.P ₹ Per Unit
Volt-Ammeter 500V 30A	CS94817E0EO	1	1380
Volt-Ammeter 500V 60A	CS94817E0TO	1	1425
Volt-Ammeter 500V, 0-75A	CS900550000	1	1425
Volt-Ammeter 500V, 0-100A	CS900560000	1	1425
Volt-Ammeter 500V, 0-125A	CS900570000	1	1425
30A Ammeter Spare for MR-G Controller	CS960260000	1	610
Volt-Ammeter (30A, 300V AC) for MR-G Controller	CS960280000	1	1060

## SPPR [HSN Code 9032]



SPPR Type	Modes of Operation			Timer
	Auto	Manual	Bypass	
Sz5	✓	✓	✓	
SDz5	✓	✓	✓	✓

Description	Cat. No.	Std. Pkg. (Nos.)	M.R.P ₹ Per Unit
SPPR type Sz5 (7 Wire), 380V	ST921660000	1	935
SPPR type Sz5 (6 Wire), 360V (For MU-G10/10H)	CS94824C000	1	935
SPPR type Sz5 (6 Wire), 380V (For MU-G6)	CS94824L000	1	935
SPPR type Sz5 (6 Wire), 415V (For MU-G10/10H)	CS94824D000	1	935
SPPR type SDz5, 360V (For MU-G20/20H)	XM818080000	1	1810
SPPR type SDz5, 380V (For MU-G30/40/50/75)	XM818070000	1	1810
SPPR type SDz5, 415V (For MU-G15/20/20H)	XM818090000	1	1810
SPPR type Sz5(6 long wire), 360V (FOR MU-G10/10H)	CS94855C000	1	1010
SPPR type Sz5(6 long wire), 415V (FOR MU-G10/10H)	CS94855D000	1	1010

## ON-OFF Plugs [HSN Code 8538]



Description	Cat. No.	Std. Pkg. (Nos.)	M.R.P ₹ Per Unit
Spare plug MU-G6 (Bulk of 10)	ST155910000	1	110
Spare plug MU-10 (Bulk of 10)	ST155920000	1	120
Spare plug MU-15 (Bulk of 10)	ST155930000	1	130
Spare plug MU-20 (Bulk of 10)	ST155940000	1	135
Spare plug MU-30 (Bulk of 10)	ST155950000	1	140
Spare plug MU-50 (Bulk of 10)	ST155960000	1	145
Spare plug MU-75 (Bulk of 10)	ST155970000	1	145

## Electronic Star-Delta Timer [HSN Code 9107]



Description	Cat. No.	Std.Pkg. (Nos.)	M.R.P ₹ Per Unit
Electronic Star-Delta Timer type ST100 160 - 500V, for 3 - 30 sec	ST803280000	1	1960

**Note:** ST100 supplied with mounting kit, suitable for ET100 replacement.

# MN Relay & ML Spares

## Spare MN Relay [HSN Code 8536]



MN 2



MN 5

Type of Mounting (Operation)	Relay Range (A)	Cat. No.	Std.Pkg. (Nos.)	M.R.P ₹ Per Unit
<b>MN 2</b>				
(Directly Operated)	6 - 10	SS9414200VO	10	1700
	9 - 15	SS9414200BO	10	1710
Direct Mounting	14 - 23	SS9414400DO	10	1860
	20 - 33	SS9414500EO	10	2740
<b>MN 5</b>				
(Directly Operated)	20 - 33	SS9413600EO	10	3410
	30 - 50	SS9413600GO	10	4200
Direct Mounting	36 - 60	SS9413600TO	10	4520
	45 - 75	SS9413700JO	10	4850
	66 - 110	SS9413700KO	10	5530

## ML Spares [HSN Code 8538]

Type	Cat. No.	Std.Pkg. (Nos.)	M.R.P ₹ Per Unit
Spare Kit ML2	SS953070000	10	4240
Spare Kit ML3	SS953090000	10	7150
Spare Kit ML4	SS953110000	10	11100
Spare Kit ML6	SS953130000	10	19600
Front Housing & Bridge Assembly Kit ML1.5	ST287340000	1	840
Front Housing & Bridge Assembly Kit ML2/3	ST238660000	1	1150
Front Housing & Bridge Assembly Kit ML4/6	ST287350000	1	2090



# SMART Controllers

## Features

- In-built Theft protection, gives emergency alert to your mobile when someone steals your pump, cable or controller
- With Dry Run, Locked Rotor and Short Circuit protection (In-built MCB with K-Curve & MCCB)
- Voltage and current based protection for all faults with individual protection Enable/Disable feature
- In-built hour based and Real Time Clock based timers with time compensation feature
- With Line Voltage, Phase Current, Power Factor, Power, Energy metering and total run time information for your pump
- Complete operation (Remote ON/OFF, parameter setting, monitoring and troubleshooting) through SMS or SMARTCOMM App or IVRS
- Available in Hindi, Gujarati, Marathi, Tamil, Telugu, Kannada, Malayalam, Bengali, Oriya, Punjabi and English languages with different language selection for individual users
- Microcontroller based technology
- Easy installation with factory fitted complete wiring and terminal block, need to connect only the supply and motor wires

With in-built short-circuit protection device



SMARTCOMM  
Smart Connect

## MU-G6S SMART Controller DOL [HSN Code 8536]

Suitable Region	IVRS Languages	Type	Suitable for Pump/Motor 3Ø, 415V, 50Hz	Relay Range (A)	Cat. No.		Std.Pkg. (Nos.)	M.R.P ₹ Per Unit
					Coil Voltage 360V-W (200V-400V)	Coil Voltage 400/440V		
Central	English, Hindi, Kannada, Telugu, Punjabi	MU-G6S	6 HP	4 - 22	CS91206CCDO	CS91206PCDO	1	19330
South	English, Hindi, Kannada, Telugu, Tamil	MU-G6S	6 HP	4 - 22	CS91206CSDO	CS91206PSDO	1	19330
North	English, Hindi, Marathi, Gujarati, Punjabi	MU-G6S	6 HP	4 - 22	CS91206CNDO	CS91206PNDO	1	19330
East	English, Hindi, Odia, Assamese, Bengali	MU-G6S	6 HP	4 - 22	CS91206CEDO	CS91206PEDO	1	19330



SMART Controller DOL MU-G6S

## MU-G10S & MU-G10HS SMART Controller DOL [HSN Code 8536]

Suitable Region	IVRS Languages	Type	Suitable for Pump/Motor 3Ø, 415V, 50Hz	Relay Range (A)	Cat. No.		Std.Pkg. (Nos.)	M.R.P ₹ Per Unit
					Coil Voltage 360V	Coil Voltage 415V		
Central	English, Hindi, Kannada, Telugu, Punjabi	MU-G10S	10 HP	4 - 22	CS91205CCDO	CS91205DCDO	1	20460
		MU-G10HS	10 HP	20 - 42	CS91207CCFO	CS91207DCFO	1	21590
South	English, Hindi, Kannada, Telugu, Tamil	MU-G10S	10 HP	4 - 22	CS91205CSDO	CS91205DSDO	1	20460
		MU-G10HS	10 HP	20 - 42	CS91207CSFO	CS91207DSFO	1	21590
North	English, Hindi, Marathi, Gujarati, Punjabi	MU-G10S	10 HP	4 - 22	CS91205CNDO	CS91205DNDO	1	20460
		MU-G10HS	10 HP	20 - 42	CS91207CNFO	CS91207DNFO	1	21590
East	English, Hindi, Odia, Assamese, Bengali	MU-G10S	10 HP	4 - 22	CS91205CEDO	CS91205DEDO	1	20460
		MU-G10HS	10 HP	20 - 42	CS91207CEFO	CS91207DEFO	1	21590



MU-G10S

# SMART Controllers

With in-built short-circuit protection device



## MU-G15S SMART Controller FASD [HSN Code 8536]



MU-G15S

Suitable Region	IVRS Languages	Type	Suitable for Pump/Motor 3Ø, 415V, 50Hz	Relay Range (A)	Cat. No.		Std. Pkg. (Nos.)	M.R.P ₹ Per Unit
					Coil Voltage 360-W (200V-400V)	Coil Voltage 400/440V		
North	English, Hindi, Marathi, Gujarati, Punjabi	MU-G15S	15 HP	4 - 22	CS91529CND0	CS91529PND0	1	26085
South	English, Hindi, Kannada, Telugu, Tamil	MU-G15S	15 HP	4 - 22	CS91529CSD0	CS91529PSD0	1	26085
East	English, Hindi, Assamese, Odia, Bengali	MU-G15S	15 HP	4 - 22	CS91529CED0	CS91529PED0	1	26085

## MU-G15HS SMART Controller FASD [HSN Code 8536]



MU-G15HS

Suitable Region	IVRS Languages	Type	Suitable for Pump/Motor 3Ø, 415V, 50Hz	Relay Range (A)	Cat. No.		Std. Pkg. (Nos.)	M.R.P ₹ Per Unit
					Coil Voltage 360-W (200V-400V)	Coil Voltage 400/440V		
North	English, Hindi, Marathi, Gujarati, Punjabi	MU-G15HS	15 HP	13 - 32	CS91530CNE0	CS91530PNE0	1	29590
South	English, Hindi, Kannada, Telugu, Tamil	MU-G15HS	15 HP	13 - 32	CS91530CSE0	CS91530PSE0	1	29590
East	English, Hindi, Assamese, Odia, Bengali	MU-G15HS	15 HP	13 - 32	CS91530CEE0	CS91530PEE0	1	29590

## MU-G20S SMART Controller FASD [HSN Code 8536]



MU-G20S

Suitable Region	IVRS Languages	Type	Suitable for Pump/Motor 3Ø, 415V, 50Hz	Relay Range (A)	Cat. No.		Std. Pkg. (Nos.)	M.R.P ₹ Per Unit
					Coil Voltage 360 V	Coil Voltage 415 V		
North	English, Hindi, Marathi, Gujarati, Punjabi	MU-G20S	20 HP	4 - 22	CS91531CND0	CS91531DND0	1	28740
South	English, Hindi, Kannada, Telugu, Tamil	MU-G20S	20 HP	4 - 22	CS91531CSD0	CS91531DSD0	1	28740
East	English, Hindi, Assamese, Odia, Bengali	MU-G20S	20 HP	4 - 22	CS91531CED0	CS91531DED0	1	28740
North	English, Hindi, Marathi, Gujarati, Punjabi	MU-G20S	20 HP	13 - 32	CS91531CNE0	CS91531DNE0	1	32345
South	English, Hindi, Kannada, Telugu, Tamil	MU-G20S	20 HP	13 - 32	CS91531CSE0	CS91531DSE0	1	32345
East	English, Hindi, Assamese, Odia, Bengali	MU-G20S	20 HP	13 - 32	CS91531CEE0	CS91531DEE0	1	32345

## MU-G20HS SMART Controller FASD [HSN Code 8536]



MU-G20HS

Suitable Region	IVRS Languages	Type	Suitable for Pump/Motor 3Ø, 415V, 50Hz	Relay Range (A)	Cat. No.		Std. Pkg. (Nos.)	M.R.P ₹ Per Unit
					Coil Voltage 360 V	Coil Voltage 415 V		
North	English, Hindi, Marathi, Gujarati, Punjabi	MU-G20HS	20 HP	13 - 42	CS91532CNFO	CS91532DNFO	1	37650
South	English, Hindi, Kannada, Telugu, Tamil	MU-G20HS	20 HP	13 - 42	CS91532CSFO	CS91532DSFO	1	37650
East	English, Hindi, Assamese, Odia, Bengali	MU-G20HS	20 HP	13 - 42	CS91532CEFO	CS91532DEFO	1	37650

## MU-G25S SMART Controller FASD [HSN Code 8536]



MU-G25S

Suitable Region	IVRS Languages	Type	Suitable for Pump/Motor 3Ø, 415V, 50Hz	Relay Range (A)	Cat. No.		Std. Pkg. (Nos.)	M.R.P ₹ Per Unit
					Coil Voltage 360 V	Coil Voltage 415 V		
North	English, Hindi, Marathi, Gujarati, Punjabi	MU-G25S	25 HP	24 - 42	CS91533CNFO	CS91533DNFO	1	40195
South	English, Hindi, Kannada, Telugu, Tamil	MU-G25S	25 HP	24 - 42	CS91533CSFO	CS91533DSFO	1	40195
East	English, Hindi, Assamese, Odia, Bengali	MU-G25S	25 HP	24 - 42	CS91533CEFO	CS91533DEFO	1	40195





# SMART Controllers

## MU-G30S SMART Controller FASD [HSN Code 8536]



MU-G30S

Suitable Region	IVRS Languages	Type	Suitable for Pump/Motor 3Ø, 415V, 50Hz	Relay Range (A)	Cat. No.	Std. Pkg. (Nos.)	M.R.P ₹ Per Unit
					Coil Voltage 380V		
North	English, Hindi, Marathi, Gujarati, Punjabi	MU-G30S	30 HP	20 - 50	CS91651LNGO	1	53445
South	English, Hindi, Kannada, Telugu, Tamil	MU-G30S	30 HP	20 - 50	CS91651LSGO	1	53445
East	English, Hindi, Assamese, Odia, Bengali	MU-G30S	30 HP	20 - 50	CS91651LEGO	1	53445

## MU-G40S SMART Controller FASD [HSN Code 8536]



MU-G40S

Suitable Region	IVRS Languages	Type	Suitable for Pump/Motor 3Ø, 415V, 50Hz	Relay Range (A)	Cat. No.	Std. Pkg. (Nos.)	M.R.P ₹ Per Unit
					Coil Voltage 380V		
North	English, Hindi, Marathi, Gujarati, Punjabi	MU-G40S	40 HP	30 - 60	CS91652LNTO	1	60940
South	English, Hindi, Kannada, Telugu, Tamil	MU-G40S	40 HP	30 - 60	CS91652LSTO	1	60940
East	English, Hindi, Assamese, Odia, Bengali	MU-G40S	40 HP	30 - 60	CS91652LETO	1	60940

## MU-G50S SMART Controller FASD [HSN Code 8536]



MU-G50S

Suitable Region	IVRS Languages	Type	Suitable for Pump/Motor 3Ø, 415V, 50Hz	Relay Range (A)	Cat. No.	Std. Pkg. (Nos.)	M.R.P ₹ Per Unit
					Coil Voltage 380V		
North	English, Hindi, Marathi, Gujarati, Punjabi	MU-G50S	50 HP	30 - 75	CS91653LNJO	1	88360
South	English, Hindi, Kannada, Telugu, Tamil	MU-G50S	50 HP	30 - 75	CS91653LSJO	1	88360
East	English, Hindi, Assamese, Odia, Bengali	MU-G50S	50 HP	30 - 75	CS91653LEJO	1	88360

## MU-G75S SMART Controller FASD [HSN Code 8536]



MU-G75S

Suitable Region	IVRS Languages	Type	Suitable for Pump/Motor 3Ø, 415V, 50Hz	Relay Range (A)	Cat. No.	Std. Pkg. (Nos.)	M.R.P ₹ Per Unit
					Coil Voltage 380V		
North	English, Hindi, Marathi, Gujarati, Punjabi	MU-G75S	75 HP	45 - 90	CS91654LNKO	1	112350
South	English, Hindi, Kannada, Telugu, Tamil	MU-G75S	75 HP	45 - 90	CS91654LSKO	1	112350
East	English, Hindi, Assamese, Odia, Bengali	MU-G75S	75 HP	45 - 90	CS91654LEKO	1	112350

# Spares for SMART Controllers

## SMART Controller Spares [HSN Code 8538]



Description	Cat. No.	Std.Pkg. (Nos.)	M.R.P ₹ Per Unit
<i>i</i> -Smart for DOL without WLC	CS914130*00	1	16180
<i>i</i> -Smart for FASD without WLC(upto 25HP)	CS914140*00	1	20300
<i>i</i> -Smart for FASD without WLC (30-75HP)	CS914150*00	1	24380
Spare CT Assembly DOL (And FASD Upto 25 HP)	CS910950000	1	1590
Spare CT Assembly FASD 30-75 HP	CS916480000	1	2295
Spare Battery Pack	CS914170000	1	1280

**Note:** Please write S for South, N for North and E for East language variants in place of \* in the *i*-Smart ordering CAT No.



# New WLC: SzLC Series

## Simplifying water control challenges



Settable Off-timer ranging from 15-150 minutes



Power On Delay Timer- 3-30 seconds



Application: Single & Double Tank



Use for Single Phase Monoset and Submersible Pump upto 3 HP and for Three Phase Submersible Pump



Auto/Manual/Bypass operating mode available\*



LED Indication



\*AUTO/ON/OFF - SzLC  
AUTO/MANUAL/BYPASS - SzLC1 & SzLC3



**AGRI CUSTOMER CARE**

Tel: +91-22-69327800  
E-mail: cic@LK-EA.com



**SMARTSHOP**

Buy only authentic products.  
smartshop.lk-ea.com



# Single Phase Starters

## MU-2P Single Phase Starters [HSN Code 8536]



MU-2P DOL Starter

Suitable for Pump/Motor 1Ø, 230V, 50Hz	Relay Range (A)	Cat. No.	Std. Pkg. (Nos.)	M.R.P ₹ Per Unit
0.125 HP	1 - 1.6	CS90319KOM0	1	2440
0.25 HP	1.5 - 2.5	CS90319KOPO	1	2440
0.5 HP	2.5 - 4	CS90319KORO	1	2440
0.75 HP	4 - 6.5	CS90319KOTO	1	2440
1 HP	6 - 10	CS90319KOVO	1	2440
2 HP	9 - 14	CS90319K0AO	1	2440
2 HP	11 - 18	CS90319KOCO	1	2455
3 HP	13 - 22	CS90319KODO	1	2485

## MF1 Single Phase Starters [HSN Code 8536]



MF1 DOL - 1Ø Starter

Suitable for Pump/Motor 1Ø, 230V, 50Hz	Relay Range (A)	Cat. No.	Std. Pkg. (Nos.)	M.R.P ₹ Per Unit
0.75 HP	4.5 - 7	SS9722700TO	1	1740
1.25 HP	6.5 - 11	SS9722700VO	1	1740
2 HP	10.5 - 17.5	SS9722700BO	1	1740
3 HP	12 - 20	SS9722700CO	1	1740



# MF-G1 Single Phase Submersible Pump Controllers

With MF1 Starter



## MF-G1 Controller [HSN Code 8536]

Starter Type	Maximum Submersible Pump Rating at 1Ø, 230V, 50Hz	Relay Range (A)	Cat. No.	Run Condenser 440V, 50Hz MFD	M.R.P ₹ Per Unit
MF-G1 with Ammeter and Voltmeter	0.5 HP	6.5 - 11	SS9772800VE	1 x 36	3880
MF-G1 with Ammeter Only	0.5 HP	6.5 - 11	SS9773400VC	1 x 25	3565
MF-G1 with Ammeter and Voltmeter	1 HP	6.5 - 11	SS9773000VE SS9773000VG	1 x 36 1 x 50	4045
MF-G1 with Ammeter Only	1 HP	6.5 - 11	SS9773600VE SS9773600VG	1 x 36 1 x 50	3725
MF-G1 with Ammeter and Voltmeter	1 HP	12 - 20	SS9773000CE SS9773000CG	1 x 36 1 x 50	4045
MF-G1 with Ammeter Only	1 HP	12 - 20	SS9773600CE SS9773600CG	1 x 36 1 x 50	3725
MF-G1 with Ammeter and Voltmeter	1.5 HP	6.5 - 11	SS9773100VG SS9773100VF	1 x 50 2 x 36	4170
MF-G1 with Ammeter Only	1.5 HP	6.5 - 11	SS9773700VF	2 x 36	3855
MF-G1 with Ammeter and Voltmeter	1.5 HP	12 - 20	SS9773100CG SS9773100CF	1 x 50 2 x 36	4170
MF-G1 with Ammeter Only	1.5 HP	12 - 20	SS9773700CG SS9773700CF	1 x 50 2 x 36	3855
MF-G1 with Ammeter and Voltmeter	2 HP	12 - 20	SS9773200CG SS9773200CF	1 x 50 2 x 36	4245
MF-G1 with Ammeter Only	2 HP	12 - 20	SS9773800CG SS9773800CF SS9773800CH	1 x 50 2 x 36 2 x 50	3910

# MR-G2 / MR-G3 Single Phase Submersible Pump Controllers

With  
MU-2P Contactor  
& MU-2P Relay



## MR-G2 / MR-G3 Controller [HSN Code 8536]

Type	Maximum Submersible Pump Rating at 1Ø, 230V, 50Hz	Cat. No.	Relay Range (A)	Start Capacitor 275V, 50Hz	Run Capacitor 440V, 50Hz MFD	With Ammeter & Voltmeter	With Ammeter Only	M.R.P ₹ Per Unit
MR-G2	0.5 HP	SS97720BATC	4 - 6.5	80 / 100	1 x 25	Yes	-	4660
		SS97720BAVC	6 - 10	80 / 100	1 x 25			
		SS97720BAVE	6 - 10	80 / 100	1 x 36	-	Yes	
		SS96988BATC	4 - 6.5	80 / 100	1 x 25			
		SS96988BAVC	6 - 10	80 / 100	1 x 25			
		SS96988BAVE	6 - 10	80 / 100	1 x 36			
	1 HP	SS97721BBVE	6 - 10	100/120	1 x 36	Yes	-	5075
		SS97721BBVG	6 - 10	100 / 120	1 x 50			
		SS97721BCVE	6 - 10	120 / 150	1 x 36			
		SS97721BCVG	6 - 10	120 / 150	1 x 50			
		SS97721BBAE	9 - 14	100 / 120	1 x 36			
		SS97721BBAG	9 - 14	100 / 120	1 x 50			
		SS97721BCAE	9 - 14	120 / 150	1 x 36			
		SS97721BCAG	9 - 14	120 / 150	1 x 50	-	Yes	
		SS96560BBVE	6 - 10	100 / 120	1 x 36			
		SS96560BBVG	6 - 10	100 / 120	1 x 50			
		SS96560BCVE	6 - 10	120 / 150	1 x 36			
		SS96560BCVG	6 - 10	120 / 150	1 x 50			
		SS96560BBAE	9 - 14	100 / 120	1 x 36			
		SS96560BBAG	9 - 14	100 / 120	1 x 50			
	SS96560BCAE	9 - 14	120 / 150	1 x 36				
	SS96560BCAG	9 - 14	120 / 150	1 x 50	Yes	-	5470	
	1.5 HP	SS97722BCAG	9 - 14	120 / 150				1 x 50
		SS97722BCAF	9 - 14	120 / 150				2 x 36
		SS97722BCAJ	9 - 14	120 / 150				1 x 72
		SS97722BDAG	9 - 14	150 / 200				1 x 50
		SS97722BDAF	9 - 14	150 / 200				2 x 36
		SS97722BDAJ	9 - 14	150 / 200				1 x 72
SS97722BCCG		11 - 18	120 / 150	1 x 50				
SS97722BCCF		11 - 18	120 / 150	2 x 36				
SS97722BCCJ		11 - 18	120 / 150	1 x 72				
SS97722BDCG		11 - 18	150 / 200	1 x 50				
SS97722BDCF	11 - 18	150 / 200	2 x 36					
SS97722BDCJ	11 - 18	150 / 200	1 x 72					



# MR-G2 / MR-G3 Single Phase Submersible Pump Controllers

## MR-G2 / MR-G3 Controller [HSN Code 8536]

Type	Maximum Submersible Pump Rating at 1Ø, 230V, 50Hz	Cat. No.	Relay Range (A)	Start Capacitor 275V, 50Hz	Run Capacitor 440V, 50Hz MFD	With Ammeter & Voltmeter	With Ammeter Only	M.R.P ₹ Per Unit			
MR-G2	1.5 HP	SS96989BCAG	9 - 14	120 / 150	1 x 50	-	Yes	5270			
		SS96989BCAF	9 - 14	120 / 150	2 x 36						
		SS96989BCAJ	9 - 14	120 / 150	1 x 72						
		SS96989BDAG	9 - 14	150 / 200	1 x 50						
		SS96989BDAF	9 - 14	150 / 200	2 x 36						
		SS96989BDAJ	9 - 14	150 / 200	1 x 72						
		SS96989BCCG	11 - 18	120 / 150	1 x 50						
		SS96989BCCF	11 - 18	120 / 150	2 x 36						
		SS96989BCCJ	11 - 18	120 / 150	1 x 72						
		SS96989BDCG	11 - 18	150 / 200	1 x 50						
		SS96989BDCF	11 - 18	150 / 200	2 x 36						
		SS96989BDCJ	11 - 18	150 / 200	1 x 72						
	2 HP	11 - 18	SS97723BDCF	11 - 18	150 / 200	2 x 36	Yes	-	5750		
			SS97723BDCJ	11 - 18	150 / 200	1 x 72					
			SS97723BECF	11 - 18	200 / 250	2 x 36					
			SS97723BECJ	11 - 18	200 / 250	1 x 72					
			SS97723BDDF	13 - 22	150 / 200	2 x 36					
			SS97723BDDJ	13 - 22	150 / 200	1 x 72					
		13 - 22	SS97723BEDF	13 - 22	200 / 250	2 x 36					
			SS97723BEDG	13 - 22	200 / 250	1 x 50					
			SS97723BEDJ	13 - 22	200 / 250	1 x 72					
			11 - 18	SS96990BDCF	11 - 18	150 / 200		2 x 36	-	Yes	5500
				SS96990BDCJ	11 - 18	150 / 200		1 x 72			
				SS96990BECF	11 - 18	200 / 250		2 x 36			
		SS96990BECJ		11 - 18	200 / 250	1 x 72					
		SS96990BDDF		13 - 22	150 / 200	2 x 36					
		SS96990BDDJ		13 - 22	150 / 200	1 x 72					
		13 - 22	SS96990BEDF	13 - 22	200 / 250	2 x 36					
			SS96990BEDG	13 - 22	200 / 250	1 x 50					
			SS96990BEDJ	13 - 22	200 / 250	1 x 72					
13 - 22	SS97724BEDH		13 - 22	200 / 250	2 x 50	Yes	-	6355			
	CS96468BEBH		16 - 26	200 / 250	2 x 50						
	SS97725BEDH		13 - 22	200 / 250	2 x 50						
16 - 26	CS96461BEBH	16 - 26	200 / 250	2 x 50	-	Yes	6030				
MR-G3	5 HP	CS90490BEEJ	20 - 32	200 / 250	3 x 50	Yes	-	9025			

# MR-G2W Single Phase Submersible Controllers (with WLC)

## MR-G2W with in-built WLC (Ammeter & Voltmeter version only) [HSN Code 8536]

Maximum Submersible Pump Rating at 1F, 230V, 50Hz	Cat. No.	Relay Range (A)	Start Capacitor 275V, 50Hz	Run Capacitor 440V, 50Hz MFD	M.R.P ₹ Per Unit
0.5HP	CS91040BATC	4 - 6.5	80 / 100	1 x 25	10315
	CS91040BAVE	6 - 10	80 / 100	1 x 36	
1HP	CS91041BBVE	6 - 10	100 / 120	1 x 36	10750
	CS91041BBVG	6 - 10	100 / 120	1 x 50	
	CS91041BCVE	6 - 10	120 / 150	1 x 36	
	CS91041BCVG	6 - 10	120 / 150	1 x 50	
	CS91041BBAE	9 - 14	100 / 120	1 x 36	
	CS91041BBAG	9 - 14	100 / 120	1 x 50	
	CS91041BCAE	9 - 14	120 / 150	1 x 36	
1.5HP	CS91042BCAG	9 - 14	120 / 150	1 x 50	11290
	CS91042BDAG	9 - 14	150 / 200	1 x 50	
	CS91042BDAF	9 - 14	150 / 200	2 x 36	
	CS91042BCCF	11 - 18	120 / 150	2 x 36	
	CS91042BDCG	11 - 18	150 / 200	1 x 50	
	CS91042BDCF	11 - 18	150 / 200	2 x 36	
2HP	CS91043BECF	11 - 18	200 / 250	2 x 36	11545
	CS91043BDDF	13 - 22	150 / 200	2 x 36	
	CS91043BEDF	13 - 22	200 / 250	2 x 36	
	CS91043BEDG	13 - 22	200 / 250	1 x 50	
3HP	CS91044BEDH	13 - 22	200 / 250	2 x 36	11960

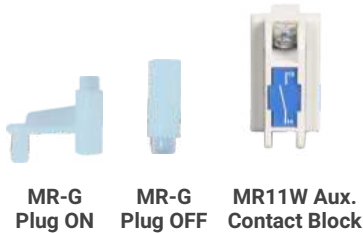
## Water Level Controller [HSN Code 9032]



WLC

Description	Cat. No.	Std.Pkg. (Nos.)	M.R.P ₹ Per Unit
Water Level Controller (240V)(Double Tank application)	XM810520000	1	1400
Water Level Controller (415V)(Double Tank application)	XM810530000	1	1400
Water Level Controller (240V) (Single Tank application)	XM810550000	1	1330
Water Level Controller (415V) (Single Tank application)	XM810560000	1	1330
WLC probes (set of 3 nos.)	XM810510000	1	465
WLC probes (set of 6 nos.)	XM810760000	1	930

# Spares for MR-G Submersible Pump Controllers



MR-G Plug ON

MR-G Plug OFF

MR11W Aux. Contact Block

## MR-G Spares [HSN Code 8538]

Description	Cat. No.	Std.Pkg. (Nos.)	M.R.P ₹ Per Unit
Add on Auxiliary Contact Block (Contact Type 1NO)	CS941790000	10	315
MR 11W, Spare Coil, 240V, 50Hz	CS94102B000	10	700
MR-G2 Plug ON & OFF (Bulk of 10 ON & 10 OFF Plugs)	CS916960000	1	280
SPARE ADD ON BLOCK, MR-G2	CS964360000	1	220



MU - 2P Contactor

## Contactor Type MU - 2P [HSN Code 8536]

Component	AC3 Rating	Type	Cat. No.	Std.Pkg. (Nos.)	M.R.P ₹ Per Unit
MU - 2P Contactor	16A	MU 16 - 2P (160-220V)	CS90117N000	10	990
	25A	MU 25 - 2P (160-220V)	CS90118N000	10	1210
	40A	MU 40 - 2P (160-220V)	CS90119N000	10	1535



MR 11W Contactor

## Contactor Type - MR 11W [HSN Code 8536]

Component	AC3 Rating	Type	Cat. No.	Std.Pkg. (Nos.)	M.R.P ₹ Per Unit
MR - 11W Contactor	25A	MR 11 W	CS94176B000	10	1200



MU - 2P Relay

## MU - 2P Relay [HSN Code 8536]

Component	Type	Cat. No.	Std.Pkg. (Nos.)	M.R.P ₹ Per Unit
MU - 2P Relay	1 - 1.6A	CS9020700MO	1	715
	1.5 - 2.5A	CS9020700PO	1	715
	2.5 - 4A	CS9020700RO	1	715
	4 - 6.5A	CS9020700TO	1	715
	6 - 10A	CS9020700VO	1	715
	9 - 14A	CS9020700AO	1	715
	11 - 18A	CS9020700CO	1	800
	13 - 22A	CS9020700DO	1	800
	16 - 26A	CS9020700BO	1	800
	20 - 32A	CS9020700EO	1	1000



## MU - 2P Spares [HSN Code 8538]



MU-2P Coil



MU-2P Top Add-On

Component	Type	Cat. No.	Std.Pkg. (Nos.)	M.R.P ₹ Per Unit
MU - 2P Spare Contact Kit	MU 16 - 2P	CS902170000	1	290
	MU 25 - 2P	CS902180000	1	380
	MU 40 - 2P	CS902190000	1	550
MU - 2P Spare Coil & Top Add-on	MU-2P Coil (220V)	CS90793N000	1	385
	MU-2P Coil (300V)	CS90793R000	1	385
	MU-2P Top Add-on (1 NO)	CS906950000	1	215

## Wiring Harness for MU-G/ MR-G Controllers [HSN Code 8538]

Description	Cat. No.	Std.Pkg. (Nos.)	M.R.P ₹ Per Unit
Wiring Harness, MU-G6 (Flexible Type)	CS961310000	1	945
Wiring Harness, MU-G10 (Flexible Type)	CS961300000	1	1340
Wiring Harness, MU-G10H (Flexible Type)	CS961340000	1	1745
Wiring Harness, MU-G15 (Flexible Type)	CS905670000	1	1980
Wiring Harness, MU-G20 (SDz5 SPPR) (Flexible Type)	CS961290000	1	2955
Wiring Harness, MU-G20H (SDz5 SPPR) (Flexible Type)	CS961350000	1	3150
Wiring Harness, MU-G30 (Flexible Type)	CS961280000	1	3870
Wiring Harness, MU-G50 (Flexible Type)	CS961270000	1	5500
Wiring Harness, MU-G75 (Flexible Type)	CS901710000	1	7910
Wiring Harness 2.5 sq. mm, MR-G2 (Flexible Type, For upto 11 - 18A Relay)	CS961330000	1	1090



# MR-Gi Digital Single Phase Controllers - Manual & Auto

## Manual version

## FEATURES

## Auto version



- Microcontroller Based Solution
- Dry Run Protection
- UV/OV Protection
- Current, Voltage Metering
- Start & Run Capacitor
- Bypass Feature
- Off Timer
- Digital Display
- Capacitor cut-off
- Automatic Current Setting

- All features of Manual Version
- Inbuilt Water Level Controller
- WLC bypass feature
- Auto start capacitor switching
- Power on delay
- Dry Run auto reset timer
- Auto & Manual mode
- RTC based daily ON/OFF timer
- Timer count down display
- Cyclic timer
- Time Compensation



## MR-Gi (Manual) [HSN Code 8536]

Type	Maximum Submersible Pump Rating at 1Ø, 230V, 50Hz	Cat. No.	Start Capacitor 275V, 50Hz	Run Capacitor 440V, 50Hz MFD	M.R.P ₹ Per Unit
MR-Gi (Manual)	0.5 Hp	CS91321NAOC	80 / 100	1 x 25	4220
		CS91321NAOE	80 / 100	1 x 36	
	1 Hp	CS91322NBOE	100 / 120	1 x 36	4440
		CS91322NBOG	100 / 120	1 x 50	
		CS91322NCOE	120 / 150	1 x 36	
		CS91322NCOG	120 / 150	1 x 50	
	1.5 Hp	CS91323NCOG	120 / 150	1 x 50	4650
		CS91323NCOF	120 / 150	2 x 36	
		CS91323NCOJ	120 / 150	1 x 72	
		CS91323NDOG	150 / 200	1 x 50	
	2 Hp	CS91323NDOF	150 / 200	2 x 36	4845
		CS91324NDOF	150 / 200	2 x 36	
		CS91324NDOH	150 / 200	2 x 50	
		CS91324NDOJ	150 / 200	1 x 72	
		CS91324NEOF	200 / 250	2 x 36	
		CS91324NEOG	200 / 250	1 x 50	
	3 Hp	CS91324NEOJ	200 / 250	1 x 72	5050
		CS91325NEOH	200 / 250	2 x 50	

## MR-GiB (Auto) [HSN Code 8536]

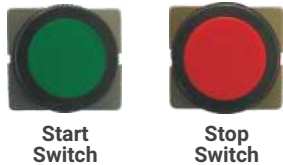
Type	Maximum Submersible Pump Rating at 1Ø, 230V, 50Hz	Cat. No.	Start Capacitor 275V, 50Hz	Run Capacitor 440V, 50Hz MFD	M.R.P ₹ Per Unit
MR-GiB (Auto)	0.5 Hp	CS91718NAOC	80 / 100	1 x 25	5300
		CS91718NAOE	80 / 100	1 x 36	
	1 Hp	CS91719NBOE	100 / 120	1 x 36	5500
		CS91719NBOG	100 / 120	1 x 50	
		CS91719NCOE	120 / 150	1 x 36	
		CS91719NCOG	120 / 150	1 x 50	
	1.5 Hp	CS91720NCOG	120 / 150	1 x 50	5695
		CS91720NCOF	120 / 150	2 x 36	
		CS91720NCOJ	120 / 150	1 x 72	
		CS91720NDOG	150 / 200	1 x 50	
		CS91720NDOF	150 / 200	2 x 36	
	2 Hp	CS91721NDOF	150 / 200	2 x 36	5910
		CS91721NDOH	150 / 200	2 x 50	
		CS91721NDOJ	150 / 200	1 x 72	
		CS91721NEOF	200 / 250	2 x 36	
		CS91721NEOG	200 / 250	1 x 50	
		CS91721NEOJ	200 / 250	1 x 72	
	3 Hp	CS91722NEOH	200 / 250	2 x 50	6115



## MR-GiA (Auto with WLC) [HSN Code 8536]

Type	Maximum Submersible Pump Rating at 1Ø, 230V, 50Hz	Cat. No.	Start Capacitor 275V, 50Hz	Run Capacitor 440V, 50Hz MFD	M.R.P ₹ Per Unit
MR-GiA (Auto with WLC)	0.5 Hp	CS91331NAOC	80 / 100	1 x 25	5850
		CS91331NAOE	80 / 100	1 x 36	
	1 Hp	CS91332NBOE	100 / 120	1 x 36	6055
		CS91332NBOG	100 / 120	1 x 50	
		CS91332NCOE	120 / 150	1 x 36	
		CS91332NCOG	120 / 150	1 x 50	
	1.5 Hp	CS91333NCOG	120 / 150	1 x 50	6255
		CS91333NCOF	120 / 150	2 x 36	
		CS91333NCOJ	120 / 150	1 x 72	
		CS91333NDOG	150 / 200	1 x 50	
		CS91333NDOF	150 / 200	2 x 36	
	2 Hp	CS91334NDOF	150 / 200	2 x 36	6445
		CS91334NDOH	150 / 200	2 x 50	
		CS91334NDOJ	150 / 200	1 x 72	
		CS91334NEOF	200 / 250	2 x 36	
		CS91334NEOG	200 / 250	1 x 50	
		CS91334NEOJ	200 / 250	1 x 72	
	3 Hp	CS91335NEOH	200 / 250	2 x 50	6660

## Digital Single Phase Controller Spares [HSN Code 8538]



Description	Cat. No.	Std.Pkg. (Nos.)	M.R.P ₹ Per Unit
Spare start switch (Manual Version)	CS913630000	1	245
Spare stop switch (Manual Version)	CS913640000	1	190
Mounting kit accessory	CS913650000	1	145
Spare 5 way terminal block	CS913660000	1	170
Spare 2 way terminal block	CS913670000	1	125
Spare Digital Module Manual	CS920250000	1	3140
Spare Digital Module Auto	CS920260000	1	4285



## Digital Single Phase Controller Spares [HSN Code 9032]

Description	Cat. No.	Std.Pkg. (Nos.)	M.R.P ₹ Per Unit
Spare Wlc Module	CS913680000	1	1200



# M-POWER Pro

Operate your pump from anywhere at anytime



## EASE OF OPERATION

Ease and convenience in operating pump from anywhere, anytime through SMS, IVRS and SMARTCOMM App



## SELECTIVE PROTECTION

One can enable or disable each protection as per convenience. One can also change the voltage and current settings as per requirement.



## EASE IN MONITORING

One can easily check important parameters such as pump status (ON/OFF), metering etc. at the comfort of SMARTCOMM App



## CONVENIENCE IN USAGE

The same device can be used with 3 phase DOL & Star - Delta starter, hence no additional device is needed.



## COMPLETE PROTECTION

Along with dry run fault protection (with dry run reset feature), it provides protection from over voltage, under voltage, single phasing or phase loss, phase reversal & phase unbalance faults.

- ★ WITH TIMER OPERATIONS
- ★ EASY THREE WIRE CONNECTION



Technology at your fingertips



SMARTCOMM  
Agri Connect



## AGRI CUSTOMER CARE

Tel: +91-22-69327800  
E-mail: cic@LK-EA.com



## SMARTSHOP

Buy only authentic products.  
smartshop.lk-ea.com

# M-POWER Pro Module For Mobile Starters

## M-POWER Pro

### Features

- Only 3 wire connection ensures easy installation with DOL and Star Delta starters
- Enables the operation (Remote ON/OFF, parameter setting, monitoring and troubleshooting) of your pump through SMS, IVRS, Call and SMARTCOMM App, thus provides the convenience in controlling the pump operation from anywhere at anytime
- Offers protection from phase loss, voltage imbalance, phase reversal, over voltage, under voltage and dry run fault with individual protection Enable/Disable feature.
- Same unit works for Three Phase DOL and Star Delta starter
- Hour based and Network based daily timers (4 Time slot) with time compensation
- Up to 4 users along with 1 master can be connected for controlling your pump operation
- Auto/Manual/Bypass mode and total run time information for your pump



SMARTCOMM  
Agri Connect

### M-POWER Pro [HSN Code 8536]

Suitable Region	IVRS Languages	Product	Cat. No.			Std. Pkg. (Nos.)	M.R.P. ₹ Per Unit
			Coil Voltage 360V	Coil Voltage 380V	Coil Voltage 415V		
North & West	English, Hindi, Marathi, Gujarati, Punjabi	M-POWER Pro	CS91313M000	CS91313L000	CS913130000	1	7690
South	English, Hindi, Kannada, Telugu, Tamil		CS91313MOSO	CS91313LOSO	CS913130OSO	1	7690
East	English, Hindi, Odia, Assamese, Bengali		CS91313MOEO	CS91313LOEO	CS913130OEO	1	7690

**Note:** Different voltage variants of M-POWER Pro are as per the coil voltages of our agri contactors and are to be suitably selected.



# M-POWER ++ & M-POWER + Module For Mobile Starters

## M-POWER ++



### Features:

- M-POWER++ is compatible with LTE 4G/ VoLTE. It also supports 2G network.
- Enables remote operation (Pump ON/OFF) through any GSM networks.
- It can be operated through Missed Call / IVRS / SMS. Regional languages are available for SMS/IVRS.
- All events communicated to User by SMS & total pump run time can be checked.
- Wide range of selection for operating modes like Auto / Manual / Timer (duration based) / 4 Daily Timers (RTC based).
- Compatible with 1 phase and 3 phase starter & controller (DOL, SASD & FASD).



### M-POWER++ [HSN Code 8538]

Description	IVRS Languages	Suitable Region	Cat. No.	Std.Pkg. (Nos.)	M.R.P. ₹ Per Unit
M-POWER++ Module for Mobile Starter - 1P/3P 3 Wire	English,Hindi, Marathi, Punjabi, Gujarati	North & West	CS9214500NO	1	5995
	English, Hindi, Kannada, Telugu, Tamil	South	CS9214500SO	1	5995
	English, Hindi, Bengali, Odiya, Assamese	East	CS9214500EO	1	5995

## M-POWER +

### M-POWER+ [HSN Code 8538]

Description	IVRS Languages	Suitable Region	Cat. No.	Std.Pkg. (Nos.)	M.R.P. ₹ Per Unit
M-POWER+ Module for Mobile Starter - 1P/3P 3 Wire	English,Hindi, Marathi, Punjabi, Gujarati	North & West	GSM030100NO	1	4995
	English, Hindi, Kannada, Telugu, Tamil	South	GSM030100SO	1	4995
	English, Hindi, Bengali, Odiya, Assamese	East	GSM030100EO	1	4995



### M-POWER+ & M-POWER++ Accessories

Description	Cat. No.	Std.Pkg. (Nos.)	M.R.P. ₹ Per Unit
Wire Type Antenna [8538]	GSM0301A000	1	510
Controller-side Wire Harness [8544]	GSM0301C000	1	185
Module-side Wire Harness [8544]	GSM0301G000	1	270



Controller-side Wire Harness & Module-side Wire Harness Wire Type Antenna



# Auto WLC

WLC monitors the water level in the tanks and controls the actuation of the motor/pump. The WLC can be used for applications like filling & draining the tank, filling only one tank with dual levels monitoring, draining only one tank with dual level monitoring.

This Auto WLC comes with three variants:

- **SzLC** – Used for Single Phase Monoblock & Self Priming Pump (Upto 3HP)
- **SzLC1** – Used for Single Phase Submersible Pump (Upto 3HP)
- **SzLC3** – Used for Three Phase Submersible

## Features

- Two level detection of water in a tank.
- One/Two tank monitoring for draining or filling or draining and filling the water
- High load switching capacity of output up to 30A. (For SzLC & SzLC1)
- Separate LED indication for water level, power, and relay status.
- Settable power on delay and OFF timer.
- Multiple operating modes like AUTO/ ON/ OFF (For SzLC) and AUTO/ MANUAL/ BYPASS (For SzLC1 & SzLC3).
- Protections against dry run and over filling, means trip against tank emptying and over filling through probe sensing only.



## Auto WLC [HSN Code 9032] **NEW**

Description	Cat. No.	Std.Pkg. (Nos.)	M.R.P. ₹ Per Unit
Auto WLC, SzLC : For Single Phase Double Tank	XM810600000	1	1945
Auto WLC, SzLC1 : For Single Phase (STARTER+CAP) Double Tank	XM810620000	1	2420
Auto WLC, SzLC : For Single Phase Single Tank	XM810660000	1	1875
Auto WLC, SzLC1 : For Single Phase (STARTER+CAP) Single Tank	XM810670000	1	2350
Auto WLC, SzLC3 : For Three Phase Double Tank	XM810650000	1	3185
Auto WLC, SzLC3 : For Three Phase Single Tank	XM810680000	1	3110





# SASDz5

SASDz5 Auto Switch SPPR is specially designed for the SASD starters. With the help of SASDz5, a Semi-Automatic (SASD) Starter can be converted into Fully Automatic (FASD) Starters. This SASDz5 is compatible with both two-button SASD starters (Start and Stop button) and three-button SASD starter (Start, Run and Stop button).

## Features

- Auto / Manual / OFF Mode (Bypass)
- Phase loss, phase reversal, voltage unbalance, over voltage protection
- On delay timer and star delta timer
- LED indications for all voltage faults
- Compatible with all types of Semi-automatic Star-Delta (SASD) starters
- Easy connection



## SASDz5 [HSN Code 9032] **NEW**

Description	Cat. No.	Std.Pkg. (Nos.)	M.R.P. ₹ Per Unit
SASDz5, AUTO SWITCH SPPR FOR 2 BUTTON SASD STARTER	XM818100000	1	1545
SASDz5, AUTO SWITCH SPPR FOR 3 BUTTON SASD STARTER	XM818110000	1	1545



# i-PROTECTOR

## Features

- Micro-controller based protection design
- Digital Ammeter and Voltmeter in select variants
- Auto/Manual/Bypass Mode available
- Suitable for all starters - upto 40A
- Protections available - Voltage Single Phasing, Current Single Phasing, Voltage unbalance fault from supply side, Current unbalance fault from motor side, Phase reversal fault, Under voltage fault, Overvoltage fault
- Dry-run fault protection (With adjustable current setting and adjustable reset time)

Now with dedicated and separate buttons for Dry Run threshold & Dry Run reset delay



i-VDSM

## Recommended i-PROTECTOR for our starters

Product	DOL						Star - Delta					
	3-Phase Starter			3- Phase Controller			3-Phase SASD / FASD Starters			3-Phase Controller (FASD)		
	MK1 / MK2	MU1 / MU1H / MU2 / MU3	MB1 / MB2	MU-G6	MU-G7.5	MU-G10 / MU-G10H / MU-G10HN	MK1	MU1 / MU2	MB1 / MB2	MU-G15	MU-G17.5	MU-G20 / MU-G20H / MU-G20HN
i-ADSM	✓	✓	✓	✓*	✓*	✓*	✓	✓	✗	✓*	✓*	✓*
i-VDSM	✓	✓	✓	✓*	✓*	✓*	✓	✓	✗	✓*	✓*	✓*

\* Note: MU-G Controller is provided with Sz5 /SDz5. In case of upgradation, use i-ADSM, i-VDSM in place of SPPR  
 ✓ Note: i-PROTECTOR is compatible with the mentioned starter

## i-PROTECTOR [HSN Code 8536]

Product Designation	Product Details	360 V	415 V	Std.Pkg. (Nos.)	M.R.P. ₹ Per Unit
i-ADSM	Single phasing preventer & dry run protection relay + VI meter (current based)	CS90863C000	CS90863D000	1	3595
i-VDSM	Single phasing preventer & dry run protection relay + VI meter (voltage based)	CS90875C000	CS90875D000	1	3595

Note: Different voltage variants of i-PROTECTOR are as per the coil voltages of our Agri contactors and are to be suitably selected.

## WIRE HARNESES FOR i-PROTECTOR [HSN Code 8544]

Description	Cat. No.	Std.Pkg. (Nos.)	M.R.P. ₹ Per Unit
Wire Harness, i-ADSM, i-VDSM	CS916350000	1	370

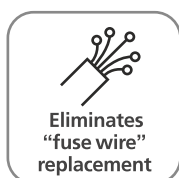


# MCB with K-Curve

## Exclusively for Agricultural Pumps

### Features

- Range available from 10A to 125A - 3 Pole and 10A to 32A - 2 Pole
- Specially designed MCBs with K-Curve
  - Short circuit tripping band suitable for submersible pumps
  - Offers effective short circuit protection
- Rated Voltage: 240V & 415V AC
- Breaking Capacity
  - 10kA as per IEC 60947-2 up to 63A
  - 15kA as per IEC 60947-2 up to 100A-125A
- Distinct advantages over rewirable fuse



### MCB Selection for Controllers

2 Pole			3 Pole		
Product	Relay Range	MCB Rating (A)	Product	Relay Range	MCB Rating (A)
MR-G2	4-6.5	10	MU-G6	4-6.5	10
	06-10	10		06-10	10
	09-14	16		09-14	16
	10-18	20	MU-G10	4-6.5	10
	13-22	25		06-10	10
16-26	32	09-14		16	
MR-G3	20-32	32	13-21	25	
			20-32	32	
MU-G10H	28-42	50	MU-G20	09-14	40
	13-21	50		13-21	50
MU-G20H	20-32	100	MU-G20H	20-32	100
	28-42	125		28-42	125

### MCB CAT NOS. & Ratings [HSN Code 8536]



MCB Pole	Cat. No.	MCB Rating (A)	Module 1Mod=17.5mm	Std.Pkg. (Nos.)	M.R.P. ₹ Per Unit
2 - Pole	LK20100K	10	2	6	855
	LK20160K	16	2	6	855
	LK20200K	20	2	6	855
	LK20250K	25	2	6	855
	LK20320K	32	2	6	855



MCB Pole	Cat. No.	MCB Rating (A)	Module 1Mod=17.5mm	Std.Pkg. (Nos.)	M.R.P. ₹ Per Unit
3 - Pole	LK30100K	10	3	4	1375
	LK30160K	16	3	4	1375
	LK30200K	20	3	4	1375
	LK30250K	25	3	4	1375
	LK30320K	32	3	4	1375
	LK30400K	40	3	4	2110
	LK30500K	50	3	4	2110
	LK30630K	63	3	4	2110
	LK31000K	100	4.5	1	8825
	LK31250K	125	4.5	1	9805

# Upcoming MCB

## MCB CAT NOS. & Ratings [HSN Code 8536]

MCB Pole	Cat. No.	MCB Rating (A)	Module 1Mod=17.5mm	Std.Pkg. (Nos.)	M.R.P. ₹ Per Unit
1 - Pole	LK10100K	10	1	12	255
	LK10160K	16	1	12	255
	LK10250K	25	1	12	255
	LK10320K	32	1	12	255





# DY125U MCCB

## For your Pump Applications

### Features

- Conforms to IS/IEC 60947-2, IEC 60947-2 & EN 60947-2
- Range: 25A to 100A, 3P, 415V AC
- Breaking capacity Icu -10kA (Ics=100% Icu)
- High Electrical & Mechanical life
- Thermal Magnetic Release
- No Load-Line Bias
- ON-TRIP-OFF indication
- Suitable for Isolation
- Rated insulation voltage (Ui) - 800VAC
- Rated impulse withstand voltage (Uimp)-8kV
- CE Marking



NEW

### MCCB Cat Nos. & Ratings [HSN Code 8536]

Type	Poles	Current Rating (A)	Breaking Capacity Icu (kA)	Cat. No.	Description	M.R.P. ₹ Per Unit
DY125U	3P	25	AC: 10kA@ 415V AC, 50 Hz/60 Hz DC : 10kA@ 250V DC (3P in series)	EM909830ODO	MCCB DY125U 25A 3P 10KA FTFM	2290
		32		EM909830OEO	MCCB DY125U 32A 3P 10KA FTFM	2290
		40		EM909830OFO	MCCB DY125U 40A 3P 10KA FTFM	2290
		50		EM909830OGO	MCCB DY125U 50A 3P 10KA FTFM	2290
		63		EM909830OHO	MCCB DY125U 63A 3P 10KA FTFM	2220
		80		EM908130OJO	MCCB DY125U 80A 3P 10KA FTFM	2220
		100		EM908130OKO	MCCB DY125U 100A 3P 10KA FTFM W/O SPRD	2220

## Upcoming Spares

### Spares [HSN Code 8538]

Description	Cat. No.
Terminal Block 30A - 3 way (For MU-G6)	XM807500000
Red & Green, Relay Extension Button Kit (For MN 2/5 Relay)	SS949680000

# Power Factor Correction Capacitors

## Features

- Self-healing property ensures longer life of capacitor
- Leak proof and high viscous resin construction, hence no leakage or spillage
- Superior quality Metalized Polypropylene (MPP) film, ingress free construction and low losses ensures capacitance value and longer life of capacitor
- Metal construction allows natural cooling in ambient
- Suitable to work on high voltage
- Improved power factor and low losses ensures optimized cable usage, lesser overheating of motor and hence lesser damage and maintenance



## Power Capacitors suitable for Agricultural Applications Box Capacitors [HSN Code 8532]

Rating	Voltage	Cat. No.	Std.Pkg. (Nos.)	M.R.P. ₹ Per Unit
1 kVAr	440V	LTBCA301B2	1	235
2 kVAr	440V	LTBCA302B2	1	455
3 kVAr	440V	LTBCA303B2	1	685
4 kVAr	440V	LTBCA304B2	1	915
5 kVAr	440V	LTBCA305B2	1	1145
6 kVAr	440V	LTBCA306B2	1	1375
7.5 kVAr	440V	LTBCA307B2	1	1720
8.33 kVAr	440V	LTBCA308B2	1	1910
10 kVAr	440V	LTBCA310B2	1	2295
12.5 kVAr	440V	LTBCA312B2	1	2865
15 kVAr	440V	LTBCA315B2	1	3435
20 kVAr	440V	LTBCA320B2	1	4580
25 kVAr	440V	LTBCA325B2	1	5720
30 kVAr	440V	LTBCA330B2	1	6855

## Cylindrical Capacitors [HSN Code 8532]

Rating	Voltage	Cat. No.	Std.Pkg. (Nos.)	M.R.P. ₹ Per Unit
1 kVAr	440V	LTCCA301B2	1	195
2 kVAr	440V	LTCCA302B2	1	380
3 kVAr	440V	LTCCA303B2	1	570
4 kVAr	440V	LTCCA304B2	1	765
5 kVAr	440V	LTCCA305B2	1	955
6 kVAr	440V	LTCCA306B2	1	1145
7.5 kVAr	440V	LTCCA307B2	1	1435
8.33 kVAr	440V	LTCCA308B2	1	1590
10 kVAr	440V	LTCCA310B2	1	1910
12.5 kVAr	440V	LTCCA312B2	1	2375
15 kVAr	440V	LTCCA315B2	1	2855
20 kVAr	440V	LTCCA320B2	1	3810
25 kVAr	440V	LTCCA325B2	1	4750
30 kVAr	440V	LTCCA330B2	1	5705

## Cylindrical Capacitors with Clamps [HSN Code 8532]

Rating	Voltage	Cat. No.	Std.Pkg. (Nos.)	M.R.P. ₹ Per Unit
1 kVAr	440V	LTCCC301B2	1	220
2 kVAr	440V	LTCCC302B2	1	410
3 kVAr	440V	LTCCC303B2	1	600
4 kVAr	440V	LTCCC304B2	1	795
5 kVAr	440V	LTCCC305B2	1	975
6 kVAr	440V	LTCCC306B2	1	1175
7.5 kVAr	440V	LTCCC307B2	1	1465
8.33 kVAr	440V	LTCCC308B2	1	1620
10 kVAr	440V	LTCCC310B2	1	1935
15 kVAr	440V	LTCCC315B2	1	2885
20 kVAr	440V	LTCCC320B2	1	3840
25 kVAr	440V	LTCCC325B2	1	4785
30 kVAr	440V	LTCCC330B2	1	5740

# Power Factor Correction Capacitors



## Power Capacitors suitable for Agricultural Applications Box Capacitors [HSN Code 8532]

Rating	Voltage	Cat. No.	Std.Pkg. (Nos.)	M.R.P. ₹ Per Unit
1 kVAr	415V	LTBCA301A2	1	235
2 kVAr	415V	LTBCA302A2	1	455
3 kVAr	415V	LTBCA303A2	1	685
4 kVAr	415V	LTBCA304A2	1	915
5 kVAr	415V	LTBCA305A2	1	1145
6 kVAr	415V	LTBCA306A2	1	1375
7.5 kVAr	415V	LTBCA307A2	1	1720
8.33 kVAr	415V	LTBCA308A2	1	1910
10 kVAr	415V	LTBCA310A2	1	2295
12.5 kVAr	415V	LTBCA312A2	1	2865
15 kVAr	415V	LTBCA315A2	1	3435
20 kVAr	415V	LTBCA320A2	1	4580
25 kVAr	415V	LTBCA325A2	1	5720
30 kVAr	415V	LTBCA330A2	1	6855



## Cylindrical Capacitors [HSN Code 8532]

Rating	Voltage	Cat. No.	Std.Pkg. (Nos.)	M.R.P. ₹ Per Unit
1 kVAr	415V	LTCCA301A2	1	195
2 kVAr	415V	LTCCA302A2	1	380
3 kVAr	415V	LTCCA303A2	1	570
4 kVAr	415V	LTCCA304A2	1	765
5 kVAr	415V	LTCCA305A2	1	955
6 kVAr	415V	LTCCA306A2	1	1145
7.5 kVAr	415V	LTCCA307A2	1	1435
8.33 kVAr	415V	LTCCA308A2	1	1590
10 kVAr	415V	LTCCA310A2	1	1910
12.5 kVAr	415V	LTCCA312A2	1	2375
15 kVAr	415V	LTCCA315A2	1	2855
20 kVAr	415V	LTCCA320A2	1	3810
25 kVAr	415V	LTCCA325A2	1	4750
30 kVAr	415V	LTCCA330A2	1	5705



# Capacitor Selection

- These are only broad guidelines
- For actual values please contact Motor manufacturer
- Recommended capacitor ratings for direct connection to induction motors

**for direct connection to induction motors to improve power factor to 0.95 or better at all loads kVAR ratings when speed is:**

Motor		3000 rpm	1500 rpm	1000 rpm	750 rpm	500 rpm
HP	KW	Capacitor (KVAR)	Capacitor (KVAR)	Capacitor (KVAR)	Capacitor (KVAR)	Capacitor (KVAR)
2.5	1.9	1	1	1.5	2	2.5
5	3.7	2	2	2.5	3.5	4
7.5	5.6	2.5	3	3.5	4.5	5.5
10	7.5	3	4	4.5	5.5	6.5
15	11.2	4	5	6	7.5	9
20	14.9	5	6	7	9	12
25	18.7	6	7	9	10.5	14.5
30	22.4	7	8	10	12	17
40	29.8	9	10	13	15	21
50	37.3	11	12.5	16	18	25
60	44.8	13	14.5	18	20	28
70	52.2	15	16.4	20	22	31
80	59.7	17	19	22	24	34
90	67.1	19	21	24	26	37
100	74.6	21	23	26	28	40
110	82.1	23	25	28	30	43
120	89.5	25	27	30	32	46
130	97.0	27	29	32	34	49
140	104.4	29	31	34	36	52
145	108.2	30	32	35	37	54
150	111.9	31	33	36	38	55
155	115.6	32	34	37	39	56
160	119.4	33	35	38	40	57
165	123.1	34	36	39	41	59
170	126.8	35	37	40	42	60
175	130.6	36	38	41	43	61
180	134.3	37	39	42	44	62
185	138.0	38	40	43	45	63
190	141.7	38	40	43	45	65
200	149.2	40	42	45	47	67
250	186.5	45	50	55	60	70

# MFD Capacitors for Single Phase Application

## Features

- Self-healing property of metalized film ensures longer life of capacitor Oil free dry resin construction, hence no leakage or spillage and no damage to panel
- Superior quality Metalized Polypropylene (MPP) film, ingress free construction and low losses ensures capacitance value and longer life of capacitor
- Suitable to work on high voltage
- High insulation resistance ensures minimum leakage loss
- Low losses and rated capacitance value ensures trouble free operation and performance of your motor

## Spare Cylindrical Condensers with Wire [HSN Code 8532]



Type	Rating	Voltage	Cat. No.	Std.Pkg. (Nos.)	M.R.P. ₹ Per Unit
Run	10	440V	LTCCMRW010B2	21	80
	12.5	440V	LTCCMRW125B2	21	95
	15	440V	LTCCMRW015B2	21	120
	20	440V	LTCCMRW020B2	21	140
	25	440V	LTCCMRW025B2	12	150
	30	440V	LTCCMRW030B2	12	160
	36	440V	LTCCMRW036B2	12	170
	40	440V	LTCCMRW040B2	12	215
	45	440V	LTCCMRW045B2	12	240
	50	440V	LTCCMRW050B2	12	250
Start	72	440V	LTCCMRW072B2	12	325
	80-100	275V	LTCCMSW100P2	12	240
	100-120	275V	LTCCMSW120P2	12	280
	120-150	275V	LTCCMSW150P2	12	330
	150-200	275V	LTCCMSW200P2	12	375
	200-250	275V	LTCCMSW250P2	12	420

## Spare Cylindrical Condensers for MR-G Controllers [HSN Code 8532]



Type	Rating	Voltage	Cat. No.	Std.Pkg. (Nos.)	M.R.P. ₹ Per Unit
Run	25	440V	LTCCMR025B2	12	175
	36	440V	LTCCMR036B2	12	195
	50	440V	LTCCMR050B2	12	305
Start	80-100	275V	LTCCMS100P2	12	280
	100-120	275V	LTCCMS120P2	12	335
	120-150	275V	LTCCMS150P2	12	385
	150-200	275V	LTCCMS200P2	12	445
	200-250	275V	LTCCMS250P2	12	495





# Submersible Flat Cable

## Submersible Cables

### Features

- 1100V Grade cable with 99.97% pure ETP grade copper
- With uniform double insulation, no shock hazards, hence safe to use
- Lesser cable resistance, hence negligible voltage drop in cable ensures appropriate voltage at motor terminals.



### Submersible Cables (Flat Cables) as per IS694 (For Andhra Pradesh, Telangana & Tamil Nadu) [HSN Code 8544]

Nominal Cross Section Area of Conductor (Sq. mm)	Construction Details/ Max Dia (mm)	Current Carrying Capacity at 40°C (A)	Cat. No.	M.R.P. ₹ Per Unit
1.5	22 / 0.3	14	WST0015PECM*.	Please refer Submersible Flat Cables Price List
2.5	36 / 0.3	18	WST0025PECM*.	
4	56 / 0.3	26	WST0040PECM*.	
6	84 / 0.3	31	WST0060PECM*.	

Note: \* 5 for 500 mts & 1 for 1000 mts.

### Submersible Cables (Flat Cables) as per IS694 [HSN Code 8544]

Nominal Cross Section Area of Conductor (Sq. mm)	Construction Details/ Max Dia (mm)	Current Carrying Capacity at 40°C (A)	Cat. No.	M.R.P. ₹ Per Unit
1	14 / 0.3	11	WS00010PECM*.	Please refer Submersible Flat Cables Price List
1.5	22 / 0.3	14	WS00015PECM*.	
2.5	36 / 0.3	18	WS00025PECM*.	
4	56 / 0.3	26	WS00040PECM*.	
6	84 / 0.3	31	WS00060PECM*.	
10	80 / 0.4	42	WS00100PECM*.	
16	126 / 0.4	57	WS00160PECM*.	

Note: \* 5 for 500 mts & 1 for 1000 mts.

## GENERAL TERMS

All prices are on Maximum retail price basis inclusive of all duties, GST & any other tax as applicable.

## WARRANTY POLICY

All products listed in the price list are covered by a warranty against manufacturing defects for a period of 18\* months from the date of purchase. For Lauritz Knudsen MCBs & Isolators mounted inside Lauritz Knudsen Distribution Boards, an extended warranty of 5 years is provided. In the event of a defect due to faulty workmanship or other associated reasons, we will, at our discretion, remedy the defect or replace the faulty parts or the entire product as soon as possible, free of cost.

However, the warranty is subject to proper usage, efficient maintenance, and does not cover defects arising from fire, accidents, inefficient maintenance, faulty operation, or deliberate or accidental damage. It also does not cover damage to power electronic components such as thyristors & IGBTs, which primarily fail due to overtemperature & over-voltage. Users need to take adequate precautions to eliminate these conditions. Manufacturer shall not be responsible & liable for any special, incidental, social or consequential (including lost profits) loss, consequential damages, injury or damages (punitive) of any kind solely attributable to defect or failure of its products. Manufacturer shall not be liable in any manner for the issue of or failure in the performance of other equipment the product is attached to.

### **NOTE:**

We are committed to maintaining our product warranty in line with our standard terms for both the Lauritz Knudsen Brand and the L&T Switchgear brand. The change in brand will not alter our standard warranty terms or any applicable extended warranty terms.

Furthermore, we will ensure that spares and after-sales support remain available throughout the entire product life cycle, regardless of whether the products are under the L&T Switchgear brand or the Lauritz Knudsen Brand

Please visit [www.LK-EA.com](http://www.LK-EA.com) for latest update on our products & prices.

# Electrical Standard Products (ESP) Offices

## HEAD OFFICE

Lauritz Knudsen Electrical & Automation, A/600, Shil-Mahape Road, TTC Industrial Area, MIDC Thane, Navi Mumbai, 400 710, Maharashtra.  
Tel: 022-6722 6300 | Fax: 022-6705 1112 | e-mail: CIC@LK-EA.com

## BRANCH OFFICES

Lauritz Knudsen Electrical & Automation  
C-201, The First Commercial Complex,  
B/S Keshavbaug Party Plot, Vastrapur,  
**Ahmedabad - 380 015**  
Phone No: 022-6932 7800  
e-mail: CIC@LK-EA.com

Lauritz Knudsen Electrical & Automation  
Ground Floor, B-27, Biplab Rashbihari Sarani,  
Sector 2A, Bidhan Nagar,  
**Durgapur - 713 212**  
Phone No: 022-6932 7800  
e-mail: CIC@LK-EA.com

Lauritz Knudsen Electrical & Automation  
Business Communication Centre  
2nd Floor, Chiramel Chambers,  
Kurisupally Road, Ravipuram,  
**Kochi - 682 015**  
Phone No: 022-6932 7800  
e-mail: CIC@LK-EA.com

Lauritz Knudsen Electrical & Automation  
A-25, 1st Floor, Imperia Complex,  
Moham Corporate Industrial Estate,  
Near Sarita Vihar Metro Station,  
Mathura Road,  
**New Delhi - 110 044**  
Phone no: 022-6932 7800  
e-mail: CIC@LK-EA.com

Lauritz Knudsen Electrical & Automation  
Wework Central, #36 Infantry Road,  
**Bengaluru - 560 001**  
Phone No: 022-6932 7800  
e-mail: CIC@LK-EA.com

Lauritz Knudsen Electrical & Automation  
6th Floor, Exotica Greens, A Block, 191,  
R G Baruah Road, Guwahati Central,  
**Guwahati - 781 005**  
Phone No: 022-6932 7800  
e-mail: CIC@LK-EA.com

Lauritz Knudsen Electrical & Automation  
2nd Floor, BN3, Salt Lake, Sector-V,  
**Kolkata - 700 091**  
Phone No: 022-6932 7800  
e-mail: CIC@LK-EA.com

Lauritz Knudsen Electrical & Automation  
A06/A07, Second Floor,  
Grand Chandra Complex, Frazer Road  
**Patna - 800 001**  
Phone No: 022-6932 7800  
e-mail: CIC@LK-EA.com

Lauritz Knudsen Electrical & Automation  
Under O Launchpad, 4th Floor,  
Unit-434, Esplanade 1, Rasulgarh,  
**Bhubaneswar - 751 010**  
Phone No: 022-6932 7800  
e-mail: CIC@LK-EA.com

Lauritz Knudsen Electrical & Automation  
Shri Daneshwari, 1st Floor,  
Plot No. 17, 2nd Cross, Near Old Income  
Tax Office Road, Vidyannagar,  
**Hubballi - 580 021**  
Phone No: 022-6932 7800  
e-mail: CIC@LK-EA.com

Lauritz Knudsen Electrical & Automation  
No.10, Fortuna Towers, 2nd Floor,  
Rana Pratap Marg, Near NBRI  
**Lucknow - 226 001**  
Phone No: 022-6932 7800  
e-mail: CIC@LK-EA.com

Lauritz Knudsen Electrical & Automation  
UrbanWrk, 5th Floor, Sai Radhe,  
Raja Bahadur Mill Road, Behind Hotel  
Grand Sheraton, Sangamwadi  
**Pune - 411 001**  
Phone No: 022-6932 7800  
e-mail: CIC@LK-EA.com

Lauritz Knudsen Electrical & Automation  
4th Floor, SCO-54, 55, Sector-17A  
**Chandigarh - 160 017**  
Phone No: 022-6932 7800  
e-mail: CIC@LK-EA.com

Lauritz Knudsen Electrical & Automation  
AWFIS Space Solutions, Prestige Phoenix,  
4th floor, 1405, Umanagar, Begumpet,  
**Hyderabad - 500 016**  
Phone No: 022-6932 7800  
e-mail: CIC@LK-EA.com

Lauritz Knudsen Electrical & Automation  
El Dorado Building, 3rd Floor, 6,  
Venkatraman Street, Chinna Chokkikulam  
**Madurai - 625 002**  
Phone No: 022-6932 7800  
e-mail: CIC@LK-EA.com

Lauritz Knudsen Electrical & Automation  
Office No. 211 & 212, Pithalia Plaza,  
KK Road, Near Fafadih Chowk,  
**Raipur - 492 001**, Chhattisgarh,  
Phone No: 022-6932 7800  
e-mail: CIC@LK-EA.com

Lauritz Knudsen Electrical & Automation,  
801 Word Level-8, No. 28,  
SIDCO Industrial Estate, Guindy,  
**Chennai - 600 032**, Tamil Nadu,  
Phone No: 022-6932 7800  
e-mail: CIC@LK-EA.com

Lauritz Knudsen Electrical & Automation  
Workie, 214 - 2nd Floor,  
Apollo Premier, PU-4,  
Scheme No. 54, Vijay Nagar Square,  
**Indore - 452 010**  
Phone No: 022-6932 7800  
e-mail: CIC@LK-EA.com

Lauritz Knudsen Electrical & Automation  
TC II, Tower B, PRIMA BAY Gate No. 5,  
Saki Vihar Road Powai,  
**Mumbai - 400 072**  
Phone No: 022-6932 7800  
e-mail: CIC@LK-EA.com

Lauritz Knudsen Electrical & Automation  
10th Floor, Titaanium Business,  
Bhimrad Road, Althan  
**Surat - 395 017**  
Phone No: 022-6932 7800  
e-mail: CIC@LK-EA.com

Lauritz Knudsen Electrical & Automation  
Playworkz Coworking Space  
43 & 44, 3rd Cross,  
Bharathy Colony, Peelamedu,  
**Coimbatore - 641 004**  
Phone No: 022-6932 7800  
e-mail: CIC@LK-EA.com

Lauritz Knudsen Electrical & Automation  
Office No. 430, 4th Floor,  
Jaipur Electronic Market, Riddhi Siddhi,  
Gopalpura Bypass,  
**Jaipur - 302 018**  
Phone No: 022-6932 7800  
e-mail: CIC@LK-EA.com

Lauritz Knudsen Electrical & Automation  
Unnati Building, 2nd Floor,  
Automation Campus, A-600, TTC Industrial  
Area Shil-Mahape Road, Mahape  
**Navi Mumbai - 400 710**  
Phone No: 022-6932 7800  
e-mail: CIC@LK-EA.com

Lauritz Knudsen Electrical & Automation  
11th Floor, Block-D, Notus IT Park,  
Sarabhai Campus, Bhailal Amin Marg,  
**Vadodara - 390 023**  
Phone No: 022-6932 7800  
e-mail: CIC@LK-EA.com

Lauritz Knudsen Electrical & Automation  
3rd Floor, 1&2 Vijay Park,  
Main Chakrata Road, Opp. Anandam,  
Near Ballapur chowk,  
**Dehradun - 248 001**  
Phone No: 022-6932 7800  
e-mail: CIC@LK-EA.com

Lauritz Knudsen Electrical & Automation  
GDR Siddha, Ground Floor, N Road  
Bistupur, Opposite St. Mary's Church,  
**Jamshedpur - 831 001**  
Phone No: 022-6932 7800  
e-mail: CIC@LK-EA.com

Lauritz Knudsen Electrical & Automation  
M1 & M2, Mezzanine Floor,  
Himalaya Excellency,  
Plot No. C-47, Pratap Nagar Square,  
**Nagpur - 440 022**  
Phone No: 022-6932 7800  
e-mail: CIC@LK-EA.com

Lauritz Knudsen Electrical & Automation  
Naga Chambers, 3rd Floor, D/No. 12-1-16,  
Plot No. 49, Survey No. 1051, Waltair Main Road,  
**Visakhapatnam - 530 002**, Andhra Pradesh,  
Phone No: 022-6932 7800  
e-mail: CIC@LK-EA.com

Product improvement is a continuous process. For the latest information and special application, please contact any of our offices listed here. Product photographs shown for representative purpose only.



Lauritz Knudsen Electrical & Automation, Electrical Standard Product  
A/600, Shil-Mahape Road, TTC Industrial Area, MIDC Thane, Navi Mumbai, 400 710,  
Maharashtra, Phone No: 022-6722 6300 | Web: www.LK-EA.com

Customer Interaction Center (CIC)  
Phone no: 022-6932 7800  
Web: www.LK-EA.com | e-mail: CIC@LK-EA.com